

**КАТАЛОГ(ОЧИСТНОЕ ОБОРУДОВАНИЕ ДЛЯ  
ПРОМЫШЛЕННЫХ ПРЕДПРИЯТИЙ)**



**ОООТЛК "СУДОКОМПЛЕКТ"**  
ПОСТАВЩИК СУДОВОГО ОБОРУДОВАНИЯ

Website: [www.mor-sk.ru](http://www.mor-sk.ru)

тел+7 920 030 05 75

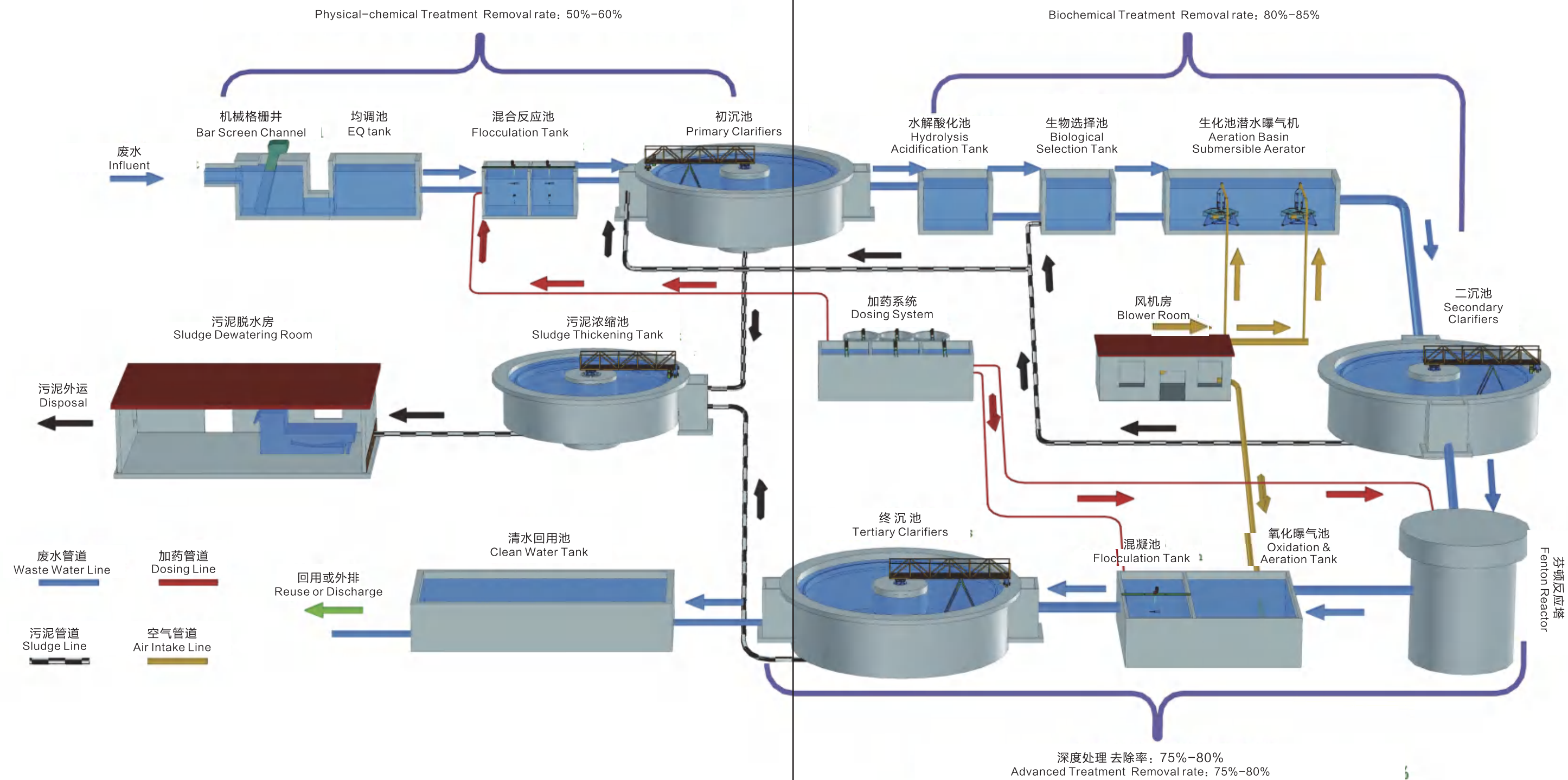
тел. +7 920 010 00 68

тел.+7 920 060 30 80

E-mail: [avponkin@yandex.ru](mailto:avponkin@yandex.ru)

E-mail: [tlk.sudokomlekt@yandex.ru](mailto:tlk.sudokomlekt@yandex.ru)

WASTEWATER TREATMENT SOLUTION





## QK-GS BAR SCREEN



## Introduction

QK-GS bar screen is a mechanical filter used to remove large objects, such as rags and plastics, from wastewater. It normally installed ahead influent pump in wastewater treatment plant .It is part of the primary filtration flow and typically is the first, or preliminary, level of filtration.With the features of compact structure, stable operation, easy handle and automatic cleaning.It is an essential equipment being installed at the influent to wastewater treatment plant and solid-liquid separation for industrial wastewater.

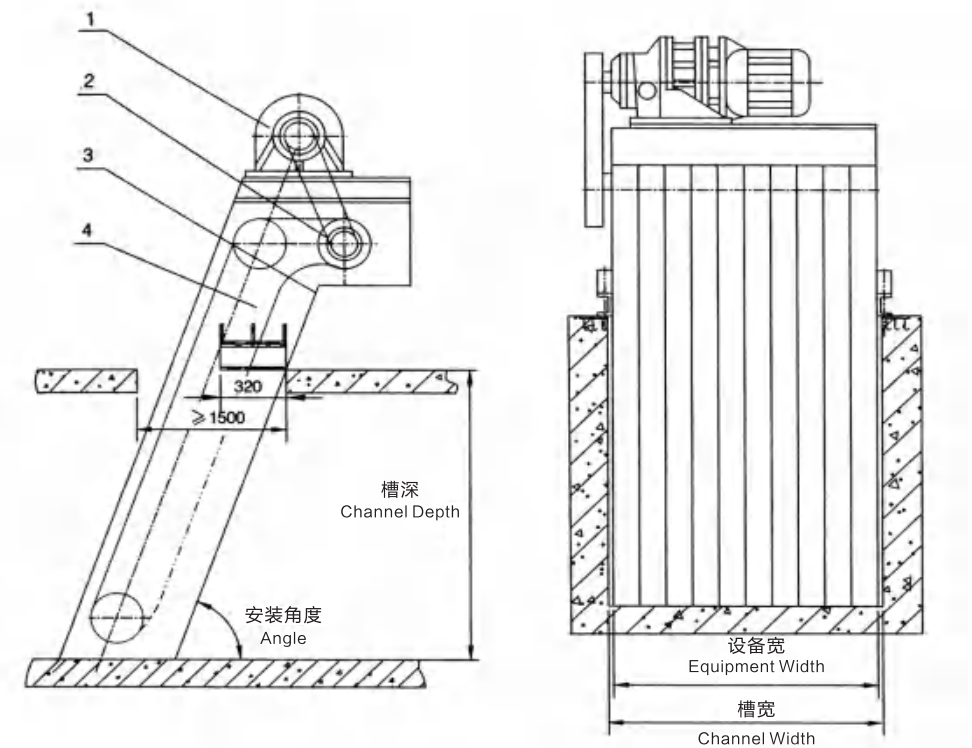
### Working Principle

The steel bars goes rotation motion. It captures waste in water while bars going up , waste falling down while bars going down on the other side of machine, Some waste sticking on the bars can be cleaned by rubber brush . At the scenario of overload, a protection spring push down to shut down the motor and stop working.

## 安装示意图

### Installation Inst

- 1、减速机  
Gear box
- 2、链轮  
Chain wheel
- 3、清污机构  
Cleaning device
- 4、机架  
Frame



## Parameters

QK-ZG ROTARY DRUM SCREEN

Introduction

QK Rotary drum screen is a mechanical press fine filter used to remove floatage and big suspended matters from wastewater. It is an essential equipment being installed at the influent to all kinds if industrial and municipal wastewater treatment plant.



Features

- 1、With multifunction of filter, conveyor and presser;
- 2、Fixed mesh clearance, removal rate reach 98%;
- 3、Stainless steel screw blade, screw pitch narrows from up to down;
- 4、Equipped with long distance PLC control connector, control box made of anti-corrosive carbon steel or stainless steel, water-proof.

Parameters

Model	ZGS6	ZGS8	ZGS10	ZGS12	ZGS14	ZGS16	ZGS18	ZGS20	ZGS22	ZGS24	ZGS26	ZGS30
Drum diameter	600	800	1000	1300	1400	1600	1800	2000	2200	2400	2600	3000
Conveyor pipe specifications												
(mm )	159	219	219	273	273	360	360	500	500	500	500	710
(mm )												
Grid length	650	830	985	1160	1370	1500	1650	2000	2200	2200	2400	3000
H3	400	500	670	800	930	1100	1200	1300	1500	1680	1800	2100
Maximum liquid level												
b(mm)						125						
C(mm)						70						
Installation angle						35℃						
H1(mm )												
Depth of channel						H1=600-2500						
H2(mm )												
Slag discharge height						H2=800-2000						
H												
Installation height						H=H1+H2+H3						
A(mm )												
Installation length						A=Hx1.43-0.48D						
L(mm )												
Total length of equipment						L=H*1.74-0.75D						

QK-ZP ROTARY DISC FILTER

Introduction

The QK-ZP Rotary disc filter is designed for tertiary treatment filtration of large volumes of wastewater with demands for high quality of cleaned water.

Working Principle

Water flows into the influent pipe of the unit, where it then enters individual filter cartridges. Impurities are caught inside the cartridge and clean water flows out. The ratio of the area used for the installation of a disc filter and the filter area is therefore quite small. It enables filtration from 10 μ m up to 200 μ m mesh size.



Parameters

型号 Model	处理量 Capacity(m³/d)	滤盘直径 DiscDiameters(mm)	单盘过滤面积 IndividualFilterArea(m²)	滤盘数量 Disc(pcs.)	功率 Power(kW)
QKZP-1000	1000	2000	5	2	0.55
QKZP-3000	3000	2000	5	4	0.75
QKZP-5000	5000	2000	5	6	0.75
QKZP-8000	8000	2000	5	10	1.1
QKZP-10000	10000	2000	5	12	1.1
QKZP-15000	15000	2000	5	18	1.5
QKZP-20000	20000	2000	5	24	2.2
QKZP-30000	30000	2000	5	30	3

QK-SS STATIC SCREEN



Introduction

Static screen is mainly used for the pretreatment of wastewater treatment, which can effectively remove most of the suspended solids in the wastewater and reduce the processing load of subsequent processes, also used for solid-liquid separation and recovery of useful substances in industrial wastewater treatment. It is an excellent non-powered device for filtering or recovering solid or colloidal substances such as suspended solids, floating matter and sediment.

Parameters

Model	Screen sieve size(mm)	External size (mm)	Net weight (kg)
QKSS-0516	500 × 1600	1350 × 1500 × 1950	400
QKSS-1516	1500 × 1600	2350 × 1500 × 1950	700
QKSS-2016	2000 × 1600	2850 × 1500 × 1950	850
QKSS-2516	2500 × 1600	3350 × 1500 × 1950	950

QK-FS WASTEWATER GRINDER



Introduction

Wastewater grinder is the sum of drumless grinder, single drum grinder and double drum grinder. It is a kind of new type of trash-removal device to deal with solid particles. It is widely used in sewage industry, replacing the traditional grill screen cleaner.

The machine can crush the floating dregs and fibre in the sewage into 6-10mm tiny particles, processed with sewage by later procedures. There is no need to deal with the dregs in the grilling. It can be buried in the ground, so the buried pump station can be true. The stink is prevented with the machine, at the same time, the damage of flies and mosquitos are forbidden. What's more, it can reduce the occupied area of land greatly, and protect our environment.

Parameters

Model	A	B	C	D	E	F	Q(m³/h)	N (kw)
QKFS500*300	500	950	1235	400	850	160	1560	4.0
QKFS600*300	600	1050	1335	400	850	160	1810	4.0
QKFS800*300	800	1250	1535	400	850	160	2160	4.0
QKFS1000*300	1000	1450	1735	400	850	160	2780	4.0
QKFS1200*300	1200	1650	1935	400	850	160	3460	4.0
QKFS1500*300	1500	1950	2135	400	850	160	4270	4.0
QKFS1000*600	1000	1568	2080	720	1350	160	5640	5.5
QKFS1500*600	1500	2068	2580	720	1350	160	6980	5.5
QKFS1800*600	1800	2368	2880	720	1350	160	8340	5.5



# QK-ZGW MICRO SCREEN FILTER

## Introduction

QK-ZGW micro screen filter is a mechanical micro solid-liquid separation filter, which can effectively remove contaminant from the water by a rotary drum micro screen. It can be used in many industrial applications where water conservation is paramount. QK-ZGW Micro screen filter provide superb mechanical filtration with astonishing cleaning performance, and the function of automatically self-cleaning system makes almost zero maintenance for the filter.

## Working Principle

The wastewater goes into micro screen filter by gravity or pump, micro mesh screen covers outer of screen. When water rotating with drum, cleaned water will be flow out through these tiny holes, while solid particles left in drum. Auto self-cleaning system place on top of the filter, to flush solid particles into a slag tank ,then discharge out of system by gravity.



# QK-XLCS CYCLONE DESANDER

## Introduction

The QK-XLCS Cyclone Desander integrate cyclone and filtration, and achieve remarkable effects in water treatment field such as desander, turbidity reduction and solid-liquid separation. It's widely used in water source heat pump, water treatment, food, medicine and other industrial fields.

## Features

- 1、Simple structure, simple operation, safe and reliable use, almost no maintenance;
- 2、Compared with the sand removal equipment such as expanded pipe and buffer box, it has the advantages of small size, large processing capacity and saving field space;
- 3、Can remove sand particles during uninterrupted water supply process;
- 4、Avoid water secondary pollution, the sand removal efficiency is very high.



## Parameters

型号 Model	QK-ZGW50	QK-ZGW100	QK-ZGW210	QK-ZGW450	QK-ZGW900	QK-ZGW1250
处理量 Capacity ( m/h )	50	100	210	450	900	1250
滤网精度 Meshhole( μ m )	10	10	10	10	10	10
转速 Rotary speed(rpa)	3-5	3-5	3-5	3-5	3-5	3-5
反洗冲量 Backwashing ( m/h )	0.7	0.7	1.4	1.4	2.1	2.8
反洗压力 BW pressure(bar)	5-6	5-6	5-6	5-6	5-6	5-6
驱动电机 Driving motor(kW)	0.18	0.37	0.37	0.75	1.5	1.5
反洗电机 BW motor(kW)	0.75	0.75	0.75	1.5	2.2	2.2

## Working Principle

Use centrifugal separation principle to achieve sand removal, when water flow through cyclone desander inlet pipe, it will form downward surrounding fluid, when the water reaches a certain part of the cone, it will rotate upward along the axis of the cylinder, finally, it is discharged through the outlet pipe, under the action of the inertial centrifugal force of the fluid and its own gravity, the sundries falling into the equipment lower conical slag bucket, on the lower part of the cone equipped with component which can prevent the sundries go up, when the sundries reach a certain point, only need to open manual butterfly valve, then the sundries will flow out of the cyclone desander.

QK-SSFL SPIRAL GRIT-WATER SEPARATOR

Working Principle

Introduction

QK-SSFL Spiral Grit-water Separator is used to separate grit-water mixture from grit chamber.



Grit-water mixture is introduced from top of separator , heavy particle will be settle down at bottom of tank. With moving of screw blade , these particle will be lift along with screw blade to top of screw channel and fall down to collection bucket. Up clean water will coming out from overflow exit. In addition, a cyclone separator also can be installed at influent.

Parameters

型号 Model	SSFL-260	SSFL-320	SSFL-355	SSFL-420
处理量L/S Capacity	5-12	12-20	20-27	27-35
功率kW Power	0.37	0.37	0.75	0.75

Advantage

- 1、Separation ratio reach 96%~98%, remove particles with diameter above 0.2mm;
- 2、Shaftless screw delivery, more light and easy maintenance;
- 3、New-tech reducer, more compact structure and stable working;
- 4、U type channel lined with wear strip, simple replacement and noiseless;
- 5、Simple installation and operation.

QK-QJB HIGH SPEED SUBMERSIBLE MIXER

Introduction

Submersible mixer, a mechanical agitator, is regard as key equipment in wastewater treatment process for a wide range of applications in industry and municipal treatment plants; it is a best solution for mixing tasks of agitating, blending, mixing, dissolving and suspension of solids ahead of biochemical treatment.

Application

QK-QJB high speed submersible mixer is mainly used for mixing, stirring and circulation in municipal and industrial sewage treatment process. It can also be applied for the maintenance of landscape water environment, by creating water flow through the rotation of impeller, improve water quality, increase oxygen content and prevent the deposition of suspended solids.



Parameters

Model	Power (kW)	Current (A)	Rotary speed (rpm)	Impeller Diameter (mm)	Force (N)	Weight (kg)
QJB0.85/8-260/3-740/C/S	0.85	3.4	740	260	163	55/58
QJB1.5/6-260/3-980/C/S	1.5	4.4	980	260	290	55/58
QJB2.2/8-320/3-740/C/S	2.2	5.9	740	320	582	74/77
QJB4/6-320/3-980/C/S	4	10.8	980	320	609	74/77
QJB1.5/8-400/3-740/S	1.5	5.6	740	400	382	76/80
QJB2.5/8-400/3-740/S	2.5	7.3	740	400	575	76/80
QJB3/8-400/3-740/S	3	8.6	740	400	642	78/82
QJB4/6-400/3-980/S	4	10.3	980	400	1010	80/84
QJB4/12-620/3-480/S	4	14	480	620	1230	240/245
QJB5/12-620/3-480/S	5	18.2	480	620	1420	240/245
QJB7.5/12-620/3-480/S	7.5	28	480	620	1963	255/270
QJB10/12-620/3-480/S	10	32	480	620	2361	255/270

QK-QJB SUBMERSIBLE MIXER ( LOW SPEED )

Features

QK Low speed plug-flow mixer is used for aeration basin of municipal sewage treatment plant and industrial wastewater treatment plant to produce low tangential flow with force, also can be used for create a flow for circulation, nitrification, denitrification and phosphorus removing.

- 1、 Compact structure , small size, light weight, easy to operate and maintenance, simple installation, long lifespan;
- 2、 Self-cleaning blade, preventing debris from twining or blocking.
- 3、 Working with aeration system, reduce power consumption;
- 4、 Insulation class F, protection class Ip68, imported permanent-lubricated maintenance-free bearings, chamber leakage detection, motor winding overheating protection;
- 5、 Mechanical seal friction made of corrosion-resistant tungsten carbide, all fastener made of stainless steel.



Parameters

型号 Model	功率 Motor power	电流A Current(A)	叶轮直径mm Impeller diameter(mm)	叶轮转速r/min Impeller RPM(r/min)	重量kg Weight(kg)
QKQJB2.2/4-1400/2-42P	2.2	5.3	1400	42	180
QKQJB2.2/4-1800/2-42P	2.2	5.3	1800	42	180
QKQJB3/4-1100/2-115P	3	7.2	1100	115	180
QKQJB3/4-1400/2-56P	3	7.2	1400	56	185
QKQJB3/4-1800/2-56P	3	7.2	1800	56	190
QKQJB4/4-1800/2-56P	4	9.2	1800	56	170
QKQJB4/4-1800/2-63P	4	9.2	1800	63	190
QKQJB4/4-2500/2-42P	4	9.2	2500	42	210
QKQJB5/4-2500/2-56P	5	11.9	2500	56	240
QKQJB7.5/4-2500/2-63P	5	11.9	2500	63	280

QK-SQM HYPERBOLOID MIXER

Introduction

QK-SQM hyperboloid mixer is widely applied for environmental protection, chemical, energy, and other industries which solid, liquid and gas mixing are required, especially in coagulation tanks, regulating tanks, anaerobic Pool, nitrification and denitrification tanks of sewage treatment plant.



Parameters

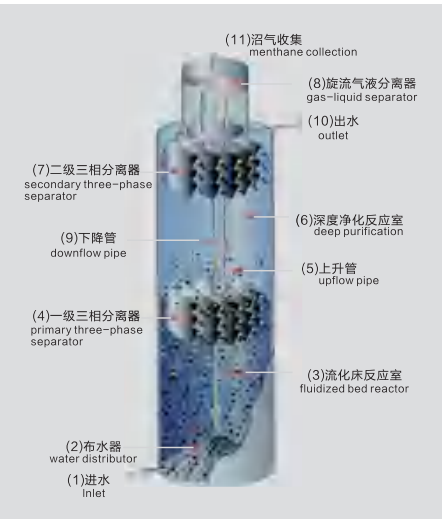
型号 Model	叶轮直径 ( mm ) ImpellerDiameter	转速 ( r/min ) RotateSpeed	功率 ( kW ) Power	服务范围 ( m ) ServiceArea	重量 ( kg ) Weight
QK-SQM	500	40-250	0.75-1.5	1-3	320
	1000	30-80	1.1-2.2	2-5	480
	1500	30-60	1.5-3	3-6	510
	2000	20-42	2.2-3	6-14	560
	2500	20-40	3-5.5	10-18	640
	2800	20-30	4-7.5	12-22	860

Features

- 1、 Used for various water treatment processes, more superior mixing effect;
- 2、 Simple structure, easy to install and maintain;
- 3、 Large specific surface area impeller with small motor, more energy saving.



# QK-IC ANAEROBIC REACTOR



## Features

- 1. Suitable for treating medium to high concentration organic wastewater;
- 2. High volumetric load, up to 30kg COD/m<sup>3</sup>.d;
- 3. High utilization value of biogas, resulting in high purity of biogas;
- 4. Good effluent stability;
- 5. Domestic anaerobic sludge can be used as seed sludge for start-up;
- 6. Strong resistance to load shock;
- 7. The internal circulation system greatly reduces the investment, operating costs, and maintenance costs of power equipment;
- 8. The footprint is small, and its volume is equivalent to one-third to one-fourth of that of a regular reactor.

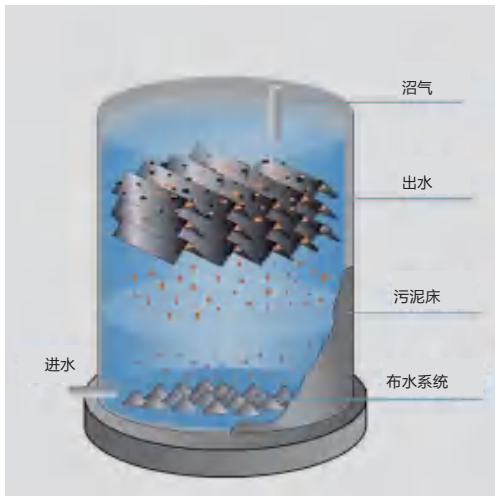
## Introduction

QK-IC Anaerobic reactor consist of two up flow anaerobic sludge blanket(UASB).Wastewater flows upwards though fluidized reactor and is degrade by anaerobic microorganisms, Methane is produced here and captured by a gas skirt and lift to air-liquid separator on the top of reactor,After separate from liquid, methane will be collected for further usage. The separated liquid back flow to the bottom which develop into a internal recycle. The effluent from primary UASB which has a much reduced BOD concentration need to be treated further by secondary UASB.The effluent from secondary UASB will be settle down in clarifier section before discharge.

## Construction site drawings



# QK-UASB ANAEROBIC REACTOR



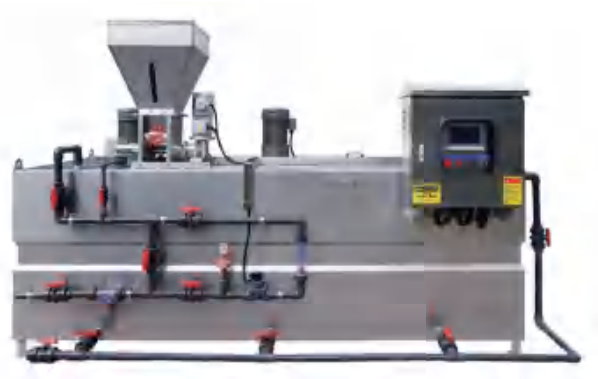
## Working Principle

UASB uses an anaerobic process whilst forming a blanket of granular sludge which suspends in the tank. Wastewater flows upwards through the blanket and is processed (degraded) by the anaerobic microorganisms. The upward flow combined with the settling action of gravity suspends the blanket with the aid of flocculants. The blanket begins to reach maturity at around three months. Small sludge granules begin to form whose surface area is covered in aggregations of bacteria. In the absence of any support matrix, the flow conditions create a selective environment in which only those microorganisms capable of attaching to each other survive and proliferate. Eventually the aggregates form into dense compact biofilms referred to as "granules".

## Introduction

Upflow Anaerobic Sludge Blanket, normally refer to UASB reactor, is a methane-producing process with features of both anaerobic filtration and activated sludge, widely used for treatment of various kinds of high organic wastewater, e.g. Food and beverage processing, brewing, pharmaceutical and chemical industry, livestock and poultry raising, printing and dyeing and landfill leachate.

QK-JY AUTO DOSING SYSTEM



Introduction

Function with dosing, mixing, conveying and automatic controlling, QK-JY auto dosing machine is widely used for raw water treatment of power plants, boiler feedwater treatment, oilgathering dewater treatment, all kinds of chemical dosing and wastewater treatment, also can be used for automatic dosing of coagulate, phosphate removing agent, ammonia, whitewash, corrosion inhibitor antisludging agent, etc.



Features

Highly automatic control , KPL control system , easy handle. Special design Multi blade mixer. Compact structure , less room occupied , simple installation. In condition of certain output and continuous working, the chemical ready time is about 1 hour, density about 0.1%-0.3%. High stability, it will give alarm and stop working when it goes faul.

Parameters

型号 Model	制备量L/H Capacity(L/H)	喂料电机功率KW Feeding motor(kw)	搅拌电机功率KW Mixer motor(kw)	设备外形尺寸L*B*H Equipment size
QK-JY500	500	0.37	0.40 × 3	1500*1000*900
QK-JY1000	1000	0.37	0.75 × 3	2000*1000*900
QK-JY1500	1500	0.55	0.75 × 3	2000*1200*900
QK-JY2000	2000	0.55	1.10 × 3	2400*1200*900
QK-JY3000	3000	0.75	1.50 × 3	3000*1000*1000
QK-JY4000	4000	0.75	1.50 × 3	3000*1200*1200
QK-JY5000	5000	0.75	1.50 × 3	3000*1500*1200
QK-JY6000	6000	0.75	1.50 × 3	3500*1500*1200

QK-JYP PC BARREL DOSING SYSTEM



Introduction

The PC Barrel dosing system is using metering pump as the main feeding device, equip with solvent tank, stirrer, level gauge, safety valve, check valve, pressure gauge, a filter, buffer, pipes, valves, base, Escalators, automatic monitoring systems, power control systems, to form simple dosing devices depends on different applications.

The quantitative chemical is placed in stirring solution tank for stirring and dissolving. After full dissolution, the chemical will be pump to certain working point by the metering pump, and the amount of chemical can be adjusted to meet various chemical requirements.

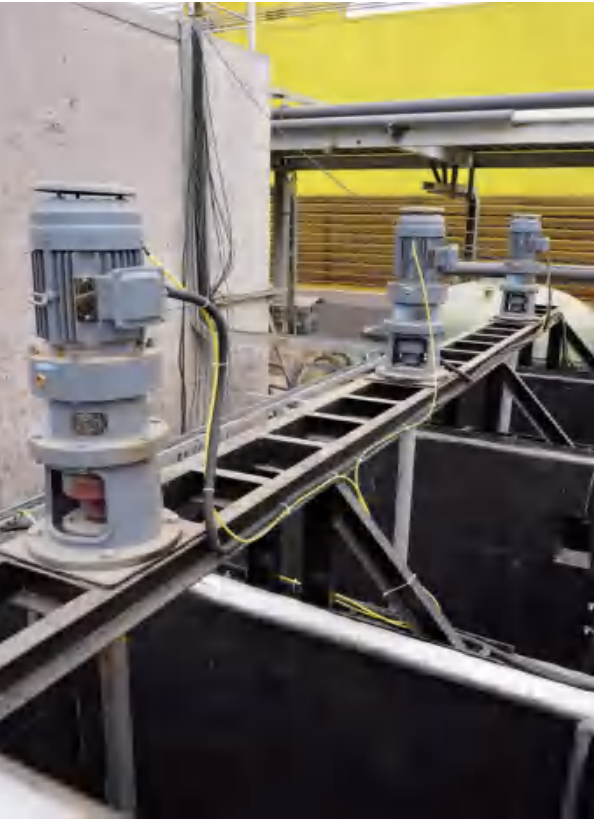




QK-JBK FRAME MIXER

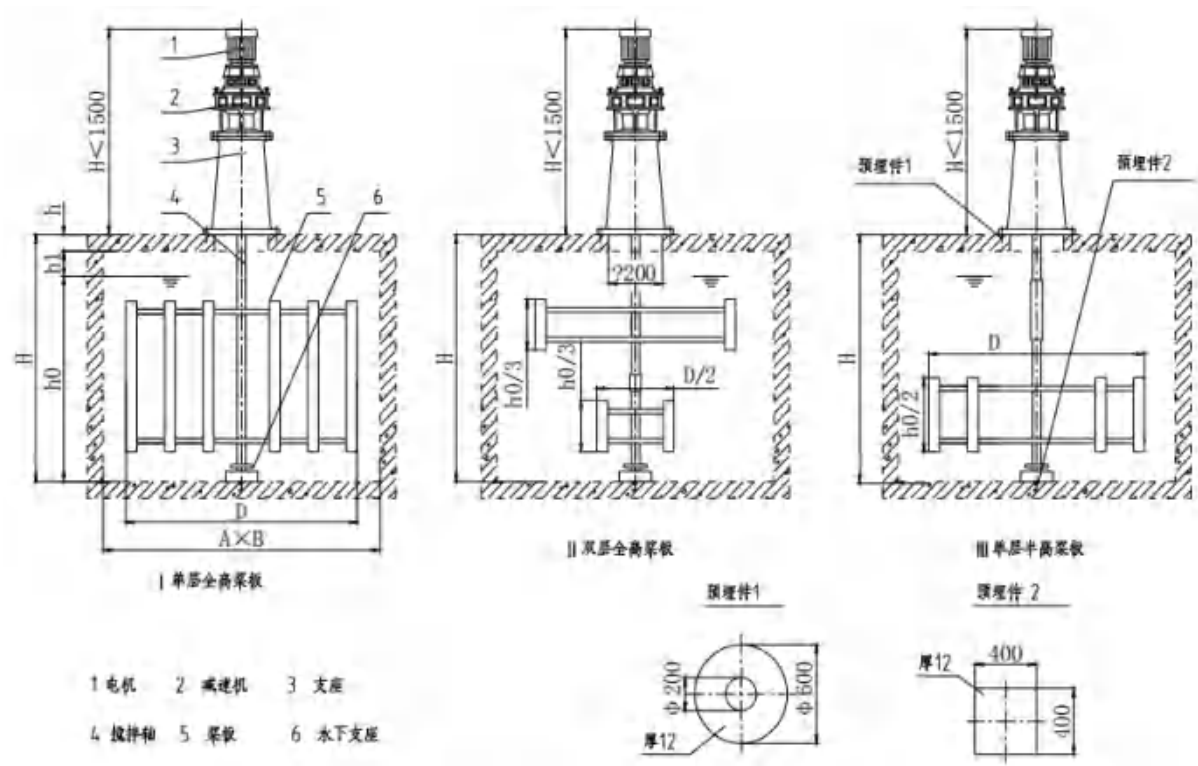
Introduction

The frame mixer can be seen as a deformation of the paddle mixer, with a relatively sturdy structure and a large amount of stirring material. The small gap between the frame stirrer and the kettle wall is conducive to the heat transfer process, and is commonly used for heat transfer, crystallization operations, and stirring of high viscosity liquids, high concentration slurries, and settling slurries.



Application

Mainly used for dissolving and stirring chemicals in water supply plants and sewage treatment plants. The flocculation stage used in the coagulation process of water supply and drainage treatment promotes the collision and adsorption of colloidal particles in the water, gradually forming a certain size of alum flowers, causing most of the alum flowers to be trapped in the sedimentation tank.



Parameters

型号 Model	池子尺寸 Dimension(m)		搅拌机尺寸 Mixer dimension (mm)			功率 Power (kw)			转速 Speed (r/min)		
	A*B	H	D	H0	H1	I	II	III	I	II	III
QKJBK-1700	2.2*2.2	3.4	1700	2600	400	0.75	0.37	0.37	8	5.2	3.9
QKJBK-2875	3.25*3.25	4	2875	3500	350				5.2	3.9	3.2
QKJBK-3000	3.5*3.5	3.55	3000	2200		0.37	0.25	0.18			1.8
QKJBK-3508	4.3*4.3	4		1200	550				3.9	2.5	1.5
	4.7*4.7	3.4	3580	1400		1.1	0.75	0.55		3.2	2.5

QK-HH MIXING AGITATOR

Features/Working principle

QK-HH vertical type agitator is used for mixing PAC/PAM with water continuously. This agitator adopts a vertical shaft, connected to a geared motor, to rotate impellers and then create fast mixing of water and chemical.



QK-XL SWIRL AERATOR

Advantages

- 1、High oxygen utilization rate. High speed air flow through the interior of the multilayer impact, cutting, formation of a large number of fine air bubbles, increase the gas-water contact area, improving the efficiency of oxygen utilization;
- 2、Perfect mixing effect. The high-speed 1:1.3 gas-water mixed flow forms a strong lifting force, soaking the sludge and stirring the water body to improve the microbial metabolism efficiency;
- 3、Stable dissolved oxygen value. The suspended activated sludge is fully combined with oxygen, and the gas-water flow is continuously circulated to ensure uniformity of the aeration tank DO. No oxygenation blind zone;
- 4、Small pressure loss. Large diameter nozzles, pressure loss is extremely small, reduce the fan power consumption.



Parameters

规格型号 Model	搅拌池尺寸m Tank size B*B*H	搅拌器尺寸 m Agitator size D H1		搅拌器转速 Agitator rotate speed r/min	功率 Motor power kw
QK-HH-300-I	1.2 x 1.2x1.6	300	400	102	0.55
QK-HH-350-I	1.5 x 1.5x1.8	350	400	102	0.55
QK-HH-450-I	1.8 x 1.8x2.0	400	600	88	1.50
QK-HH-600-II	2.2 x 2.2x2.2	500	600	88	2.20
QK-HH-800-II	2.4 x 2.4x2.4	600	800	58	3.00
QK-HH-900-II	3.0 x 3.0x3.0	800	800	46	3.00
QK-HH-1000-II	4.0 x 4.0x4.0	900	1000	46	3.00

设备特点

- 1、不带任何活动零部件，无损坏，免维护；
- 2、混合流经大口径喷嘴释放，无堵塞，免清污；
- 3、纳米级新材料，抗老化，无结垢；
- 4、适应各种废水环境，10年以上稳定运行。

Features

- 1、Without any moving parts, no damage, free-maintenance;
- 2、The mixture flows through the large-diameter nozzle to release, no clogging, and free-cleaning;
- 3、Nano-scale new materials, anti-aging, no scaling;
- 4、Adapt to various wastewater environments, stable operation more than 10 years.

技术参数 Parameter

型号 Model	通气量 Air inlet	阻力 Resistance	充氧能力 Oxygen capacity	氧利用率 Oxygen utilization ratio	动力效率 Dynamic efficiency	水深 Water depth
XL-750	0.6-0.9	0-1.5	1.8-2.5	18-25	>5.0	>5

QK-QXB SELF PRIMING SUBMERSIBLE AERATOR



Working Principle

The QXB submersible aerator adopt an unique hydraulic component design to optimize the gap between the impeller and the vane (old type is more than 5mm, QXB type is less than 1mm). Driven by a high-speed rotating motor, the impeller generates centrifugal force in the water, and formed a negative pressure zone around the impeller under the action of centrifugal force, and air is sucked through the intake pipe. The air and water are shredded by the high-speed rotating impeller in the mixing chamber, then go out through the diffusion channel in a high speed, and form bubbles, and integrate the oxygen into the water. Because of the powerful jet of water, and the star impeller cuts the air bubble to be thinner, smaller and denser, this makes the air bubble more contact with the processed liquid, air is sheared into lots of tiny bubbles, increases the mass transfer area greatly, and form spiraling effective water circulation, a lot of oxygen is dissolved in water, improve the oxygen utilization greatly.

Application

QXB type submersible aerator is professional aeration equipment mainly used for feeding water pretreatment and sewage biochemical treatment process, such as aeration grit chamber, pre-aeration tank, aeration tank, air flotation tank, stirring etc., also can be used in aquaculture pond to add oxygen and landscape water conservation.

Features

- 1、High oxygen utilization rate;
- 2、Large service area;
- 3、Simple structure, compact, permanent lubrication bearing, high quality machine seal;
- 4、Long service life, no trouble in long-term operation;
- 5、Save engineering investment, no need air source and blower, easy to install, low noise.

Parameters

型号Model	QXB0.75	QXB1.5	QXB2.2	QXB3	QXB4	QXB5.5	QXB7.5	QXB11	QXB15	QXB18.5	QXB22
功率 ( kW )	0.75	1.5	2.2	3	4	5.5	7.5	11	15	18.5	22
电流 ( A )	5.65/2.2	4	6	7.8	8.8	13	20	24	32	40	45
电压 ( V )	220/380					380					
转速 ( rpm )	2850					1470					
频率 ( Hz )						50					
绝缘等级						F					
最大潜入深度 ( m )	2	3	3.5	3.5	5	4	4.5	5	7	5.5	6
服务面积 ( m² )	9	16	20	35	35	60	63	100	100	120	145



QK-QB SUBMERSIBLE AERATOR



Introduction

QK-QB Submersible Aerator is an essential equipment in aeration basin, it utilizes fine or medium bubbles diffuse to provide aeration and mixing to process water. QK-QB submersible aerator is widely used in municipal sewage treatment plant and industrial wastewater treatment plant, like paper mill wastewater treatment, petroleum & chemical industrial wastewater treatment plant, etc.

Working principle

The pressured air supplied by blower goes through air pipe and reach to rotor, high speed rotor hit and break pressured air into tiny bubbles. These tiny bubbles and water around are shaped to wave curve by strongly mixing of rotor. The stator channel can ensure the air-water liquid evenly distributed in different shapes of aerator basin, meantime, strong mixing flow by rotor continuously mix the water and activated sludge, which ensures the ideal aeration efficiency. The negative-pressure while submersible aerator working, lead to self priming, thus it will lower the air pressure, supplied by blower, normally this pressure just equal to water height. So it is obviously energy-saving than traditional aerator.

Features

- 1、stable  $\alpha$  value;
- 2、Easy to install and transfer, no need to empty aeration basin;
- 3、No need air cooling;
- 4、100% no clogging;
- 5、High and stable dynamic efficiency;
- 6、Underwater working, noiseless;
- 7、Long lifespan.

Parameter

型号 Model	QK-QB1.5	QK-QB3	QK-QB5.5	QK-QB7.5	QK-QB11	QK-QB15	QK-QB22
功率kw power (Kw)	1.5	3	5.5	7.5	11	15	22
设备高度mm Height (mm)	1350	1580	1970	2100	2260	2400	2500
设备直径m Equipment diameter (m)	1200	1420	1720	1720	2270	2270	2610
水深m Depth (m)	3-20	3-20	3-20	3-20	3-20	3-20	3-20
进气量m³/h Inflow (m³/h)	150	220	300	480	600	750	1300
水深5米时充氧量Kgo <sub>2</sub> /h Oxygenation capacity (Kgo <sub>2</sub> /h) Depth 5 meters	~ 45	~ 66	~ 90	~ 144	~ 180	~ 225	~ 390
辐射直径m Working diameter	4	6	9	12	15	18	23



QK-TB PLUG-FLOW AERATOR



Introduction

QK-TB Plug-flow Aerator is a new type of aeration equipment, with the function of both aeration and mixing. Air, water and sludge can fully mixing and constitute a circulation flow. QK-TB Plug-flow Aerator is widely used for municipal sewage treatment plant, industrial waste – water treatment plant, and all kinds of industrial aeration basin.

Working principle

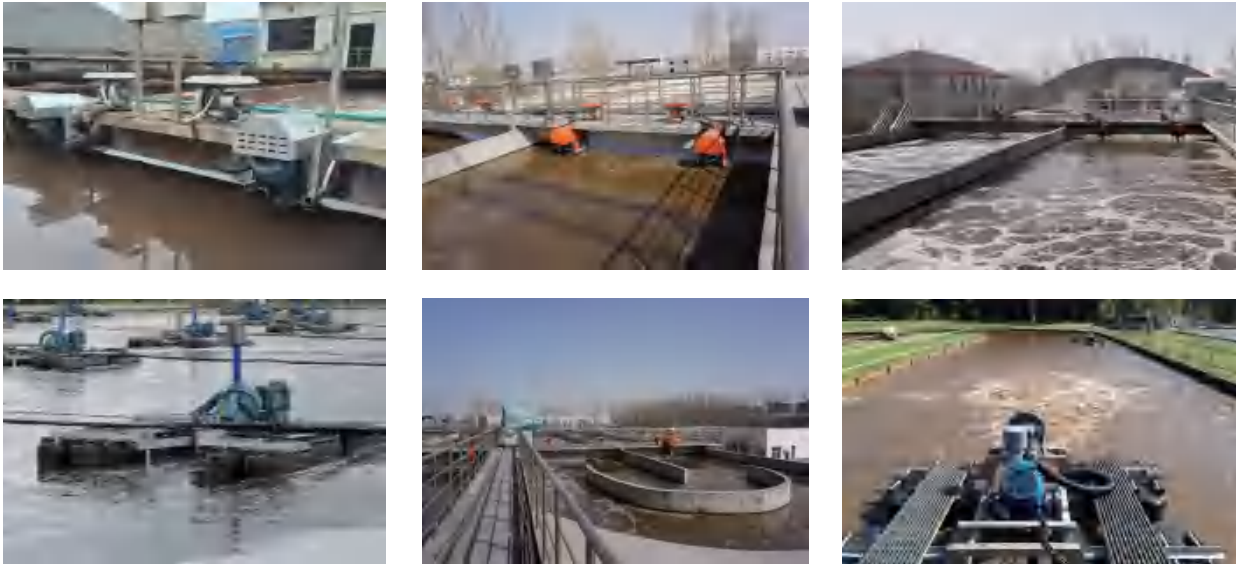
Driven by motor, propellers spin and caused a low pressure zone. Air is introduced though air pipe to reach the low pressure zone, in where,water and air are pressed into tiny bubbles. These bubbles diffuse to provide aeration and mixing to process water.

Features

- 1、Parts contact with water made of SS304;
- 2、Motor power ranges from 5.5kw to 37kw;
- 3、No spilling or spraying side effects;
- 4、Underwater aeration and mixing;
- 5、Single or combined installation available;
- 6、Continuous circulation flow.

Parameter

型号 Model	QK-TB5.5	QK-TB7.5	QK-TB11	QK-TB18.5	QK-TB37
功率kw power (Kw)	5.5	7.5	11	18.5	37
风机功率kw Blower motor(kw)	1.5	3	4	5.5	7.5
转速r/min Rotating speed	720	720	730	730	730
工作水深m Working depth(m)	2-4.8	2.5-5	3.5-6.5	4.5-7.5	5.0-8.5
进气量m³/h Air intake(m³/h)	210	330	420	550	700
充氧量kgO₂/h Oxygenation capacity(kgO₂/h)	~ 62	~ 99	~ 126	~ 165	~ 210
推流距离m Working distance(m)	8-24	10-25	18-35	30-55	40-70



## QK-WBG MICROPOROUS AERATION PIPE



### Features

- 1、Simple structure in linear type ,easy in installation and maintanation;
- 2、Adopting advanced world famous brand components in pneumatic parts ,electric parts and operation parts;
- 3、High pressure double crank to control the die opening and closing;
- 4、Running in a high automatization and intellectualization,no pollution;
- 5、Apply a linker to connect with the air conveyor ,which can directly inline with filling machine.

### Advantages

- 1、High oxygen transfer efficiency;
- 2、Low cost of total investment;
- 3、Anti-clogging, corrosion resistant;
- 4、Easy installation;
- 5、Maintenance-free design, 8 years service life;
- 6、EPDM membrane have excellent performance.

### Application

- 1、Municipal Sewage;
- 2、Various Industrial Wastewater Treatment;
- 3、Ozone Diffuse;
- 4、Sludge Stabilization;
- 5、Aquafarm;
- 6、Rivers And Lakes Purify Water.

## QK-WBP MICROPOROUS AERATION DISC



### Features

- 1、Anti-blocking;
- 2、High tear resistance;
- 3、Uniform gas distribution, energy saving and high efficiency;
- 4、Anti-aging, anti-corrosion;
- 5、Low resistance loss.

### Introduction

QK-WBP Microporous Aeration Disc is a new type membrane micro - porous aeration products,which used to diffuse micro-bubble air, the diffuser disc is mainly made of microporous materials such as ceramics, titanium powder, alumina, silicon oxide and nylon, the produced bubble diameter is less than 2mm, and have high oxygen utilization rate, often installed in the form of assembly, it is widely used in the biochemical oxidation pool and air flotation pool in the wastewater treatment process. Its disadvantage is easy to block, air need to filter and purify, diffusion resistance is high etc.

### Application

- 1、Aeration for SBR reaction basin, contact oxidation pond, and activated sludge aeration basin in sewage disposal plant;
- 2、Aerobic tanks in denitrification / dephosphorization processes;
- 3、Aeration for excreta and animal wastewater treatment plant;
- 4、Aeration of deep aeration basin;
- 5、Aeration for high concentration wastewater aeration basin, and aeration for equalization basin of wastewater treatment plant;
- 6、Aeration of other applications.





Features

- 1、Bridge structure, less weight;
- 2、Lower operation cost, simple maintenance and management;
- 3、New transmission device, simple installation;
- 4、Optional over-torque protection unit, more reliable and safer operation;
- 5、Optional PLC connecting port, customized operation available.



QK-ZGX PERIPHERAL DRIVING SLUDGE THICKENER

Introduction

QK-ZGX peripheral driving sludge thickener is installed on medium and large size circular clarifier tanks in wastewater treatment plant. Inlet water and sludge discharge pass though the center pit of bottom, Outlet water overflow around tank , which keeps a stable water quality and quantity.

Working Principle

QK-ZGX peripheral driving sludge thickener consists of a mobile steel girder, double lateral trolley, two rotation units with peripheral drive system, a scraping unit, an evacuating device,a scum skimming unit, flow guidance, solids collection bucket, center supports, electrics

and control box. The sludge inlet is in the middle, but the flow is deviated by the baffle in order to optimize the thickening. The sludge scraper blades, made in standard section, remove the sludge accumulated on the bottom and collect it in a central pit wherefrom, by a piping, is conveyed to the outlet. Outlet sludge can return or disposal to sludge thickening tank. Scum above water is skimmed to collection bucket for further disposal.

Parameter

Type	Tank diameter (m)	Tank depth (m)	Peripheral speed (m/min)	Motor power (kw)
QK-ZGX12	12	3.5	1-2	0.18
QK-ZGX14	14	3.5	1-2	0.18
QK-ZGX16	16	3.5	1-2	0.25
QK-ZGX18	18	4.0	1-2	0.25
QK-ZGX20	20	4.0	1-2	0.37
QK-ZGX25	25	4.0	1-2	0.37
QK-ZGX30	30	4.5	1-2	0.55
QK-ZGX36	36	4.5	1-2	0.55
QK-ZGX42	42	4.5	1-2	0.75
QK-ZGX48	48	4.5	1-2	0.75
QK-ZGX56	56	4.5	1-2	1.10

QK-HG

BRIDGE SLUDGE THICKENER

Introduction

QK-HG Truss bridge sludge thickener is widely used for removing solid matters of flat flow clarifier tanks. The sludge at the bottom will be scraped to the pump suction port. Combined with siphon and pump suction, the sludge will be removed while walking.

Working Principle

Supported by four point and travels along rectangular clarifier, bi-side driving on steel rails, QK-HG Truss Bridge Sludge Thickener move from one side of tank to the other side , sucking while moving, when it reach to end ,back moving and sucking . The suspension enters from beginning of rectangular calfifier and spreads to the tank; The particles weight than water will be settle down on bottom, and sucked into the pipe by the suction nozzle then pumped to sludge thickening tank.



Features

- QK-HG Bridge sludge thickener is our new-designed equipment with features of followings:
- 1、Submersible sludge sucking pump, no clogging, light weight, no shaft vibration issue;
  - 2、Small capacity Submersible sludge sucking pump, each suction system installed with a pump;
  - 3、Pump sucking & siphoning;
  - 4、No vacuuming device, auto control system, easy handle and maintenance.



Parameter

参数型号 Model	QK-HG4	QK-HG6	QK-HG8	QK-HG10	QK-HG12	QK-HG15	QK-HG18	QK-HG20
池宽m Tank width(m)	4	6	8	10	12	15	18	20
跨度m Span(m)	根据实际情况而定 According to actual condition							
轮距m Wheel distance(m)	根据实际情况而定 According to actual condition							
速度m/min Speed(m/min)	1-1.5							
驱动功率kw Drive motor(kw)	0.25	0.37	0.55	0.37*2	0.37*2	0.55*2	0.55*2	0.75*2
水泵要求 Water pump	根据实际情况而定 According to actual condition							
水泵数量 Pump No.	根据实际情况而定 According to actual condition							
池深m Pump No.	3-5							
钢轨型号 Rail model	22kg/m-24kg/m GB11264-89				30kg/m GB11264-89			



QK-XB LAMELLA CLARIFIER ( INCLINED TUBE SETTLER )



Introduction

The lamella clarifier also called inclined plate sediment tank, It is kind of high efficient combined type settling tank; set many dense inclined tube packing in sediment area, to make the suspended impurity in water sediment, water rise flow along inclined tube, the separated sludge down to the tank bottom along the inclined tube by gravity, then discharge it in concentration. Such tank can improve sediment efficiency 50~60%, it can improve treatment capacity 3~5 times in the same area. It can design different flow rate inclined plate sediment device according to raw waste water test report, it need dose flocculant usually.

Inclined plate sediment water purifier is format by install 60° dip angle inclined tube above the sludge suspended layer, to make the suspended solids or floc alum flower by dosing flocculant accumulate into thin sludge later in inclined tube downside superficial area, slide back to sludge suspended layer rely on gravity, then settling in sludge collecting hopper, discharge into sludge tank by sludge pipe for separate treatment or comprehensive utilization. The supernatant fluid gradually rise to water collecting pipe discharge or reuse.

Parameters

Specification	QKXB-5	QKXB-10	QKXB-15	QKXB-20	QKXB-25	QKXB-30	QKXB-40	QKXB-50
Treatment capacity(m³/h)	5	10	15	20	25	30	40	50
Equipment size(m)	2.2*2*3.5	2.25*2.25*6	2*2.5*6	9*2.25*2.25	8*3*4.5	8*3.5*4.5	10*3.5*4.5	12*3.5*4.5

QK-SM STATIC MIXER



Introduction

The static mixer is a non-power efficient mixing equipment with very wide range of availability. With only few energy of the fluid to be converted to a mixed energy and by means of the precisely designed blades, the fluid will enter into the mixer tube, and result in the function of split, reversed, mixed and rectifier so to achieve a perfect dispersion and mixture purpose. Compared with the traditional mixer, Static Mixer is with compact structure, low energy consumption, less investment, flexible operation and no maintenance requirement. We can supply with SS304 or SS316L material.

Parameters

Model	Diameter (DN mm)	Length (mm)					Flow rate (T/Hr)
		4	6	8	10	12	
QKSM-15	15	103	147	191	235	279	0.3-0.6
QKSM-20	20	139	201	263	325	387	0.6-1.2
QKSM-25	25	183	267	351	435	519	0.9-1.8
QKSM-32	32	207	303	399	495	591	1.4-2.8
QKSM-40	40	247	363	479	595	711	2.2-4.5
QKSM-50	50	320	470	620	770	920	3.5-7.0
QKSM-65	65	428	632	836	1040	1244	6.0-12
QKSM-80	80	504	746	988	1230	1472	9.0-18
QKSM-100	100	625	925	1225	1525	1825	14-28
QKSM-125	125	773	1147	1521	1895	2269	22-44



# QK-NS BELT FILTER PRESS

## Introduction

QK-NS Belt Filter Press is used for soild/liquid separation process, particularly the dewatering of sludge in the chemical industry, paper mill, printing and dyeing mill, mining and water treatment. The process of dewatering is primarily obtained by passing a pair of filtering cloths and belt through a system of rollers,the system takes sludge or slurry as a feed ,and separates it into a filtrate and a soild cake.



## Working Principle

QK-NS Belt Filter Press is a Biosolids/sludge dewatering device that applies mechanical pressure to a chemically conditioned slurry, which is sandwiched between two tensioned belts, by passing those belts through a serpentine of decreasing diameter rolls. The machine can actually be divided into three zones: gravity zone, where free draining water is drained by gravity through a porous belt; wedge zone, where the solids are prepared for pressure application; and pressure zone, where medium, then high pressure is applied to the conditioned solids.- Typically, a belt filter press receives a slurry ranging from 1-4% feed solids and produces a final product of 18-22% cake solids. Performance depends on the nature of the solids being processed.

## Features

Simple and reliable,with good quality; High capacity thoughput,low inital cost and low energy running cost, noisesless; Low staffing, easy maintance and long life; Open and viewable at flow level for easier adjustment and monitoring; Continuous working; Be widely used for many fields.



## Parameter

型 号 Model	QK-NS0.8	QK-NS1.0	QK-NS1.5	QK-NS2.0	QK-NS2.5
浓缩机功率kw Thickener motor (kw)	0.75	0.75	1.1	1.5	1.5
压榨机功率kw Press motor (kw)	1.5	1.5	2.2	3.0	4.0
带宽mm Belt width (mm)	800	1000	1500	2000	2500
浓缩滤带运行速度m/min Thickener belt speed (m/min)	5-17				
压榨滤带运行速度m/min Filter belt speed (m/min)	4-14				
清洗水压Mpa Cleaning water pressure (Mpa)	≥0.5				
长mm Length (mm)	5770	5770	5770	7300	7300
宽mm Width (mm)	1620	1820	2320	3000	3500
高mm Height (mm)	2180	2180	2180	2400	2400
进料含固率% Inlet sludge consistency(%)	≥1%				
泥饼干度率% Outlet sludge dry content(%)	18-22%	( 根据污泥性质不同有所变化 ) (It depends on sludge characteristics )			
处理量m³/h Capacity (m³/h)	5- 10	10-16	16-26	26-36	36- 46
	( 根据污泥性质不同有所变化 ) (It depends on sludge characteristics )				
绝干泥m³/h Bone dry sludge capacity (m³/h)	0.05-0.1	0.1-0.16	0.16-0.26	0.26-0.36	0.36-0.46
	( 根据污泥性质不同有所变化 ) (It depends on sludge characteristics )				

QK-LW

THREE PHASE DECANter CENTRIFUGE

Introduction

The three phase decanter centrifuge, it is a horizontal spiral discharge, high –efficiency centrifugal separation, and settlement equipment for continuous operation. It is suitable for dehydration of sludge produced during industrial and civil sewage treatment, and is also widely used in chemical industry, light industry, pharmaceutical, food, environmental protection and other industries.



Working principle

The drum and spiral rotation at a high speed at a certain direction is at the same time. The material continuously introduced the inner inner tube of the inner pupa from the feed tube. Form a sediment. The push of the sedimentary solid–phase was pushed continuously to the rotary cone end, and was discharged outside the scum discharge port. Light liquid –phase objects form an inner liquid ring, which continuously overflows the drum from a large –end overflow of the drum. Under the speed of this function, continuous feeding, separation, washing and unloading.

Parameter

Model	MAX RPM	Value	Capacity(m³/h)	power	Weight kg	Dimension(mm)
QKLW-230-1000	5600	4000	0.5-3	7.5-15	900	2300*700*1200
QKLW-380-1520	4000	3420	1-5	18.5-22	3200	3500*1000*1500
QKLW-380-1720	3800	3070	3-6	22-30	2800	3400*1100*1400
QKLW-430-1720	3700	3290	8-10	30-37	3200	3500*1200*1500
QKLW-500-2000	3500	3420	10-20	45-55	6000	4300*1850*1300

QK-MD

MANURE DEWATERING MACHINE



Introduction

The manure dehydrator (dung solid–liquid separator) separates the raw manure of pig manure, duck manure, cow manure, chicken manure and other poultry manure into liquid organic fertilizer and solid organic fertilizer. Liquid organic fertilizer can be directly used for crop

utilization and absorption, and solid organic fertilizer can be transported to areas lacking fertilizer for use, and can also improve soil structure. At the same time, it can be fermented into organic compound fertilizer. The mud pump is used to send the raw manure water into the machine, and the solid material is squeezed and separated through the screw shaft arranged in the screen, and the liquid flows out from the liquid outlet through the screen.

Parameter

Model	QKMD-180	QKMD-200	QKMD-300
Voltage	220V/380V	380V	380V
Main Power	4kw	5.5kw	7.5kw
Pump Power	3kw	3kw	3kw
Weight	230kg	360kg	420kg
Dimensions	1800*1300*500mm	2100*1400*500mm	1400*1400*500mm
wet manure suction(CBM)	20	22	25
dry manure capacity(CBM)	5	7	15

# QK-GY HIGH PRESSURE BELT PRESS DEHYDRATOR



### Step 1:

The original sludge (water content around 97%), is pumped to the sludge into the belt filter press, the dewatering performance of the sludge is improved by a coagulant (generally cationic polyacrylamide), which is filtered by belt concentration.

Most of the moisture is removed afterwards. After dewatering by belt sludge filter press, the moisture content of sludge can be reach to 80%.

### Step 2:

The primary dewatered sludge (moisture content around 80%) is transported to the sludge modified mixer by the conveyor.

The belt sludge filter press + continuous sludge advanced dewatering machine workflow, the working principle as blow:

### Step 3:

Sludge modification. Two sludge hardeners and sludge modifiers (carbonic acid) are added to the sludge modified mixer by chemical dosing system.

Calcium + ferric chloride) mixing with sludge, to change the physical and chemical properties of sludge. In the sludge modified mixer, the sludge reacts quickly with hardeners and modifiers. The function of the curing agent and the modifier is to crack the sludge structure , destabilize the colloid, thereby reducing the water retention of the sludge, so that the combined water is converted into "free water"; Make sludge "pieces".

Granulation" and "porosity" , create the conditions for further deep dehydration.

### Step 4:

Advanced pressing (dewatering). The modified sludge is transported to a continuous sludge advanced filter press, after advanced dewatering, the sludge forms a flake-like mud cake, and the moisture content is reduced to less than 50%, complete the advanced dewatering process.



# QK-DL SCREW PRESS DEHYDRATOR

### Introduction

QK Screw press dehydrator is applied for thickening and dewatering of sludge in WWTPs, with features of small footprint ,lightweight and automatic operation with minimal maintenance. The water content of discharge solids is about 80%, for sludge from STP.



### Working Principle

Sludge feed to filter cartridge from inlet, then moves forward under pushing force between spiral blade and moving rings. As the decreasing of space in each ring, the pressure goes higher, and then filtration goes down by gravity, solids part screw up then discharge from outlet.

### Parameters

Model	Capacity(kg/h)	Power(kW)	Disc Specification(mm)	Weight(kg)
QKDL-131	5~10	0.36	DN130*1180	250
QKDL-132	10~20	0.54	DN130*1180	350
QKDL-133	15~30	0.91	DN130*1180	450
QKDL-251	15~30	0.92	DN250*1760	500
QKDL-252	30~60	1.47	DN250*1760	800
QKDL-253	45~90	2.2	DN250*1760	1100
QKDL-301	30~60	1.3	DN300*2220	750
QKDL-302	60~120	2.05	DN300*2220	1340
QKDL-303	90~180	3	DN300*2220	1750
QKDL-304	120~240	3.75	DN300*2220	2150
QKDL-351	50~100	1.85	DN350*2480	1150
QKDL-352	100~200	2.95	DN350*2480	1950
QKDL-353	150~300	4.4	DN350*2480	2800
QKDL-354	200~400	5.9	DN350*2480	3700
QKDL-401	80~160	3	DN400*3100	2050
QKDL-402	160~320	4.5	DN400*3100	3850
QKDL-403	240~480	7.5	DN400*3100	5400
QKDL-404	320~640	9	DN400*3100	7000





# QK-BK PLATE AND FRAME FILTER PRESS

## Introduction

QK Plate And Frame Filter Press is intermittent filtration equipment, widely used for solid-liquid separation of various suspending liquid. Filter plates are pressed by pressing devices, and then suspension is pumped into the filtration chamber. Solid particles and liquid is separated through filter cloth. The products are simple in structure but good in separating effects, convenient in use, and widely used in mining, metallurgy, petroleum, chemical, medicine, textile, printing and dyeing, paper making, foodstuff, alcohol, inorganic salt, coal washing, dyestuff and sewage treatment industries.

## Parameters

型号 Model	面积(m²) Area	滤板尺寸(mm) Plate Size	滤室厚度(mm) Cake thickness	滤室容积(L) Filter chamber volume	滤板数量(pcs) Plate Qty	过滤压力(MPa) Filtration pressure	电机功率(kw) Motor Power	整机质量(Kg) Weight	外形尺寸长*宽*高(mm) Dimension(mm)
QKBK-870	30	870*870	≤35	498	23	≥0.8	4	3046	3815*1430*1230
	40			623	29			3593	4200*1430*1230
	50			789	37			4057	4715*1430*1230
	60			955	45			4597	5235*1430*1230
	70			1121	53			5136	5755*1430*1230
	80			1287	61			5636	6275*1430*1230

Model	(m²) Area	(mm) Plate Size	(mm) Cake thickness	(L) Filter chamber volume	(pcs) Plate Qty	(MPa) Motor Power	(kw) Weight	(Kg) Filtration pressure	(mm) Dimension(mm)
QKBK-1000	50	1000*1000	≤35	776	27	≥0.8	4	4352	4385*1570*1380
	60			943	33			4480	4885*1570*1380
	70			1109	39			5263	5245*1570*1380
	80			1275	45			5719	5675*1570*1380
	100			1608	57			6555	6525*1570*1380
	120			1941	69			7466	7375*1570*1380
QKBK-1250	80	1250*1250	≤40	1560	29	≥0.8	5.5	10900	5080*1840*1630
	100			1975	37			11750	5690*1840*1630
	120			2391	45			12600	6310*1840*1630
	150			2911	55			13620	7070*1840*1630
	160			3119	59			14470	7380*1840*1630
	200			3847	73			15320	8450*1840*1630
	240			4679	89			16170	9670*1840*1630
	250			4783	91			17020	9820*1840*1630
QKBK-1500	200	1500*1500	≤40	3809	49	≥0.8	11	26120	7140*2200*1820
	250			4723	61			26930	7730*2200*1820
	300			5637	73			28160	8720*2200*1820
	350			6551	85			29600	10110*2200*1820
	400			7618	99			31500	11260*2200*1820
	450			8532	111			33400	12250*2200*1820
QKBK-2000	500	2000*2000	≤40	9446	123	≥0.8	15	33380	13240*2200*1820
	600			11901	85			48840	11820*2750*2400
	700			13838	99			52640	13031*2750*2400
	800			15960	113			56440	14242*2750*2400
	900			17713	127			60240	15453*2750*2400
	1000			19651	141			64040	16664*2750*2400



QK-ZY

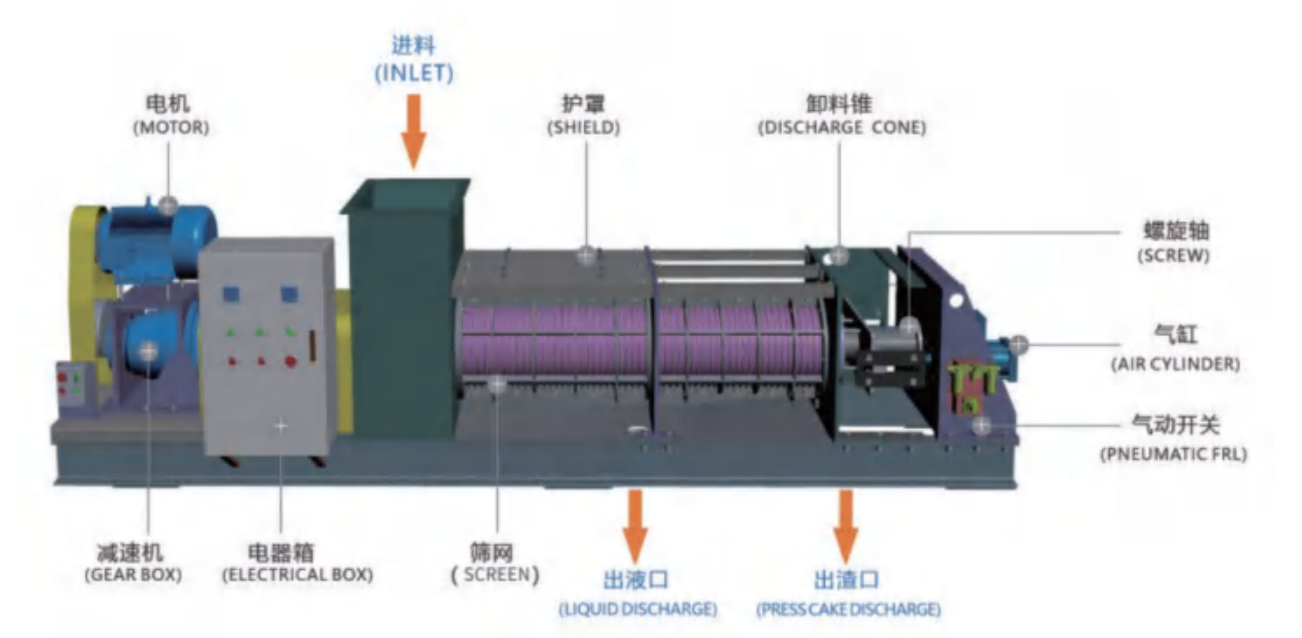
SCREW PRESS

Introduction

A screw press is a type of equipment that uses physical extrusion for dehydration. The equipment is composed of a drive system, a feed box, a screw auger, a screen, a pneumatic blocking device, a water collection tank, a frame, and other parts. Materials enter the equipment from the feed box and are subjected to progressive pressure compression under the transportation of the screw auger. Excess water is discharged through the screen through the outlet, and the dehydrated materials continue to be transported by the screw auger, The top opening material blocking device is discharged from the equipment through the discharge port.

1Features

- 1、Low operating costs;
- 2、Continuous work with high processing capacity;
- 3、Low slag moisture;
- 4、Wear and corrosion resistance;
- 5、No need to add medication;



Working Principle

The dehydration process of the screw press dehydrator is divided into two stages. At the beginning, a spiral auger is used for dehydration. The spiral auger is divided into three sections: a transmission section, a compression section, and a discharge section. The transmission section ensures that the material smoothly enters the equipment. The pitch and inner diameter of the spiral blades in the dehydration section gradually decrease, resulting in a gradually decreasing transmission space. Due to the gradual reduction of the transmission space, a gradually increasing pressure is formed on the material, forcing the material volume to decrease and squeeze out water; In the second stage, a material blocking device is used for dehydration. When the material enters the spiral auger discharge section, the spiral auger will apply axial thrust to the material and push it out of the discharge port. At the same time, the material blocking device pressurized by the air pressure device will apply reverse force to the material that is about to be pushed out, thereby forming extrusion pressure for two-stage dehydration of the material.

Parameter

型号 Model	处理量-进料量/出渣量(t/h) Processing capacity - feed rate slag discharge rate	螺旋直径(mm) Spiral diameter	转速(r/min) Speed	功率(kw) Power	重量(t) Weight	外形尺寸长*宽*高(mm) Dimension(mm)
QKZY-120	0.1-0.3/0.26	120	30	4	0.5	1900*420*700
QKZY-180	0.3-1/0.5	180	20	5.5	0.8	2500*550*800
QKZY-250	0.8-3/0.93	250	16	7.5	1.2	3100*650*900
QKZY-315	2-5/1.6	315	16	11	2.3	4100*790*1320
QKZY-400	5-13/2	400	10	22	4	4700*990*1420
QKZY-500	8-18/3.3	500	9	37	6	5800*1500*1570
QKZY-630	15-35/4.2	630	9	45	10	6800*1600*1750
QKZY-800	25-50/7	800	7	75	15	9600*1860*2100
QKZY-1000	30-70/8.5	1000	6	90	35	11000*3100*2800



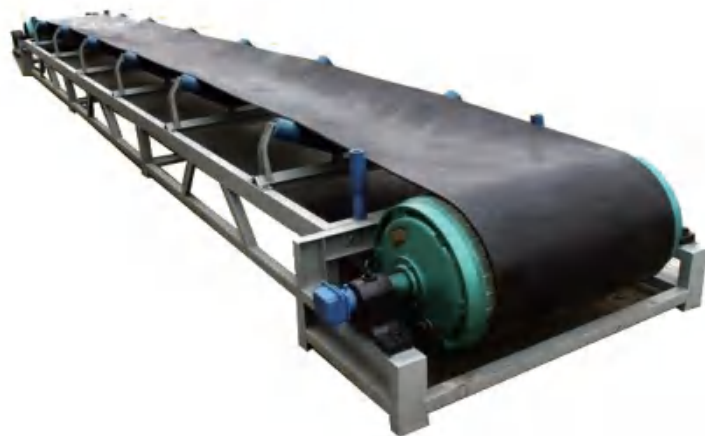
# QK-PDSS BELT CONVEYOR

## Introduction

QK-PDSS belt conveyor is a machine which through friction drive to achieve materials transport. It is mainly composed of frame, conveyor belt, carrier roller, drum, tension device and transmission device etc. It form a material conveying process from the initial feeding point to the final unloading point.It can not only convey the broken bulk materials, but also can convey the complete materials.

## Working Principle

Belt conveyor mainly composed of two end roller and a closed conveyor belt on the end roller. The drum driving the conveyor belt is called the driving drum, the other is only to change the direction of movement of the conveyor belt is called the redirection roller. The driving drum is driven by a motor through a reducer, and the conveyor belt is dragged by the friction between the driving drum and the conveyor belt .  
The driving drum is usually mounted at the unloading end to increase traction, it’ s good for dragging. The material is fed through the feedin g end, land up a moving conveyor belt, rely on the conveyor belt friction transport to the unloading end to unload.



## Features

- 1、 Long transport distance, large transport capacity, continuous transport;
- 2、 Reliable operation, easy to realize automation and centralized control;
- 3、 Fuselage can stretch out and draw back easily, the machine tail can be elongated or shortened along with the coal mining working progress, and have compact structure, can be no basis, just directly laying on the roadway floor, the frame is light and it’ s very convenient to disassembly and assembly;
- 4、 Widely used in metallurgy, coal, transportation, hydropower, chemical and other sectors, besides, also can be used in building materials, electric power, light industry, cereals, ports, ships and other departments.

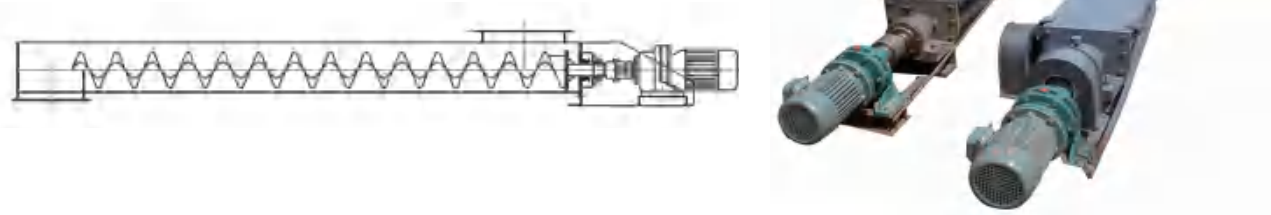
# QK-LS SHAFTLESS SCREW CONVEYOR

63-64

## Introduction/Features

QK-LS shaftless screw conveyor transfer materials by rotary of screw, consist of motor, support frame, conveying screw, U shape tank, lining plate, cover plate, and feeding section. It has advantages of compact structure, space saving, smooth material handling and no clogging and binding. Plus, the entire transfer process occurs in a closed tank , no materials escape and no secondary pollution.

- 1、 Shaftless screw technique, small material contact facet, low friction, no clogging or twisting;
- 2、 Single pressing U shape tank as support frame, with high intensity, equipped with removable cover for monitoring delivery process;
- 3、 Lined with wear-resistant plate between U shape tank and screw, easy handling and maintenance;
- 4、 Cycloidal pin gear speed reducer more smooth transmission with less noise;
- 5、 Thickened spiral slice, long lifespan.



## Parameter

型号 Model	螺旋片直径mm Screw diameter(mm)	叶片螺距mm Screw pitch(mm)	处理量m³/h Capacity(m³/h)	转速r/min RPM(r/min)	功率kw power (Kw)
QK-260	260	260	3	19	1.5
QK-280	280	280	5	19	2.2
QK-300	300	300	7	19	3.0
QK-320	320	320	8	19	4.0
QK-360	360	360	10	19	4.0
QK-400	400	380	15	19	5.5



## QK-ZHTL COMBINED PACKING



### Introduction

QK-ZHTL combined packing is developed on the basis of soft and semi-soft fillers, it has both advantages. Its structure is change plastic round buckle to large plastic rings with double loops, press the aldehyde fiber or polyester yarn on the toroidal ring and distribute the fiber bundles evenly; the inner ring is made of snowflake plastic branches, it can not only hang film, but also can cut bubbles effectively and improve oxygen transfer rate and utilization rate. Thus make the organic matter in the water is treated efficiently.

### Application

Used for sewage and waste water treatment projects, suitable for contact oxidation tower, oxidation tank and other equipment, it's a wastewater treatment biological carrier for biological contact oxidation process and unareobic fermentation.

### Features

- 1、High heat dissipation performance;
- 2、Low resistance;
- 3、Good performance of water and gas distribution;
- 4、Easy to grow membrane;
- 5、Can cut bubbles.

65-66

## QK-XB/G INCLINED TUBE/ PLATE PACKING



### Introduction

QK-XB/G Inclined tube have 3 different materials: PP, PVC, FRP. Assembly form has inclined pipe and straight pipe two forms, Honeycomb inclined tube packing is mainly used for various sedimentation and sand removal, it has been widely used in water supply and drainage engineering in recent years and has become a water treatment device. It have many advantages such as wide application range, high treatment effect, small area occupied etc.

### Features

- 1、Large wet cycle, small hydraulic radius;
- 2、Laminar conditions is good, particle settlement is not disturbed by flocculation;
- 3、When the inclined pipe is 1 meter long, the effluent water quality is best;
- 4、When use honeycomb inclined pipe at the water intake place, when pipe is 2.0 ~ 3.0m, it can work safely in the high turbidity of 50-100 kg/m3 of mud and sand content;
- 5、Adopt inclined sedimentation tank, the treatment capacity is 3-5 times of the horizontal sedimentation tank, and 2-3 times of accelerating clarifier and pulse clarifier.

QK-MBR MEMBRANE BIO-REACTOR

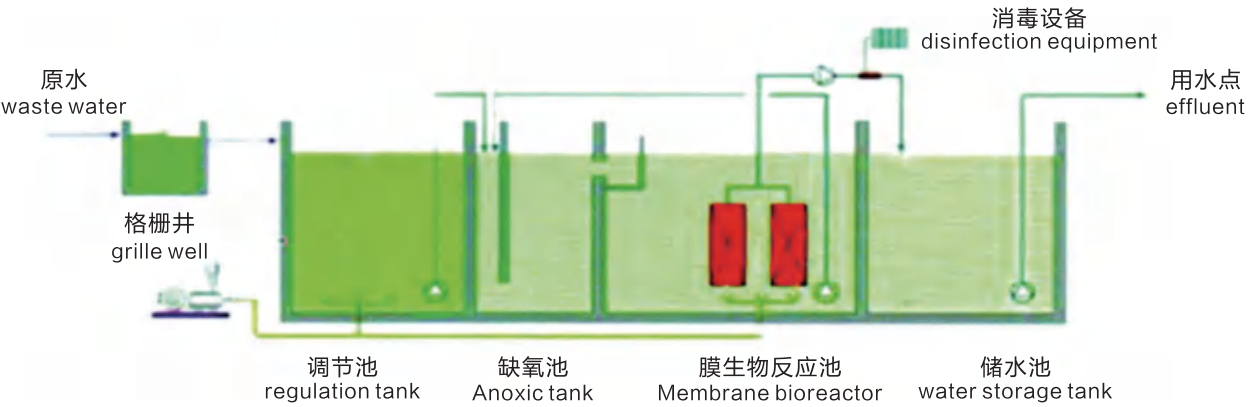


Introduction

Membrane bioreactor (MBR) is the combination of a membrane process like microfiltration or ultrafiltration with a suspended growth bioreactor, and is now widely used for municipal and industrial wastewater treatment. The main features of our MBR include: high quality outlet, lower running cost, high adjust ability, less sludge outcome, automatic operation and less land occupied. It can be used both for a small complete wastewater treatment system and a post-treatment for a large wastewater treatment plant.

Features

- 1、A perfect choice for a small size domestic wastewater treatment system;
- 2、Fiberglass and stainless steel , with good Anti- corrosion performance , working life can reach over 50 years;
- 3、Simple installation and operation,auto control system.



Application

- 1、Hotel, restaurant, sanatorium, hospital;
- 2、Small village/town;
- 3、Station, airport, port;
- 4、Factory , mining , military camp, scenic spots;
- 5、Industrial organic wastewater similar with domestic wastewater.

MBR Inlet/Outlet Water Quality

项目 Item	进水水质 Influent	出水水质 Effluent
pH	6-9	6-9
COD ( mg/L )	≤500	≤50
BOD ( mg/L )	≤300	≤10
SS ( mg/L )	≤100	≤10



出水水质达到并超过国家《城镇污水处理厂污染物排放标准》（GB18918-2002）一级A排放标准。

The effluent quality to reach and exceed the national "urban sewage treatment plant pollutant discharge standard" (GB18918-2002) a A emission standards. cigarette waste water, etc..

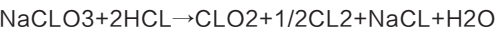
QK-EL CHLORINE DIOXIDE GENERATOR

QK-CL SODIUM HYPOCHLORITE GENERATOR

Introduction

QK-EL chlorine dioxide generator, by chemical oxygen reaction, with accurate measurement, control and closed loop monitoring system, is a precise and reliable high-tech disinfection product; the processing system is mainly composed of metering pump, reactor and traffic monitoring system, with features of compact structure, reliable performance, simple installation and maintenance.

Working Principle



Material: Sodium chlorate (concentration: over 99%),  
Hydrochloric acid (concentration: over 31%).



Introduction

The sodium hypochlorite generator is a type of water treatment disinfection device which uses sodium chloride as a raw material to produce a sodium hypochlorite solution by electrolytic reaction. Sodium hypochlorite is a strong oxidizing agent and disinfectant derived from a wide range of inexpensive industrial or dilutes seawater. In order to ensure the high disinfection activity and texture fresh, the generated sodium chlorate will be used while the process is generating. It function with both oxidation and disinfection same as chlorine and chlorine compounds.

Parameter

型号 Model	压力 Pressure(Mpa)	功率 Power(kW)
QK-EL50	50	32
QK-EL100	100	32
QK-EL200	200	32
QK-EL300	300	32
QK-EL500	500	32
QK-EL800	800	32
QK-EL1000	1000	40

Application

Sodium hypochlorite generator is mainly used for the treatment of bacteria-containing sewage in hospitals, electroplating treatment of cyanide-containing wastewater, and can also be used for disinfection of swimming pools, drinking water, and domestic sewage disinfection, food processing plant and medical equipment, restaurants, public canteens, tableware and drinking utensils.



# QK-ZYX ULTRAVIOLET STERILIZERS

QK Ultraviolet Sterilizers is applied for disinfection of purified water such as drinking water, pure water, industrial and commercial water, etc.



## Working Principle

Invisible UV can be divided into three types: UVA, UVB, UVC, where the C-band wavelength ranges 200–280 nm, of which the 240–270 nm band has the strongest disinfection ability, and can make the microorganisms pathogenic by directly killing DNA of viruses, bacteria, and spores in water.

## Advantages

- 1、Applied to disinfect water that contains various microorganisms, including bacteria, viruses, fungi and protozoa;
- 2、No second side effects occur after disinfection;
- 3、Low cost, quick effect, simple operation and convenient maintenance;
- 4、Can be customized as requirement, accurately match the most cost-effective models.

# QK-SL SAND FILTER

## Introduction



Sand filter is a kind of pressure filter with quartz sand or manganese sand as filler. It can effectively remove suspended solids, organic matter, colloids, sediment, etc. The sand filter has the advantages of small filtration resistance, fast filtration speed, high filtration precision, large interception capacity, large specific surface area, strong acid and alkali resistance and good anti-pollution property. It is mainly used in the field of advanced treatment of various process water, domestic water, circulating water and waste-water such as electricity, electronics, beverages, tap water, petroleum, chemical, metallurgy, textile, paper, food, swimming pool, municipal engineering, etc.

## Working Principle

The filter sand takes up most space of the chamber. It sits either on a nozzle floor or on top of a drainage system which allows the filtered water to exit. The pre-treated raw water enters the filter chamber on the top, flows through the filter medium and the effluent drains through the drainage system in the lower part. Large process plants have also a system implemented to evenly distribute the raw water to the filter. In addition, a distribution system controlling the air flow is usually included. It allows a constant air and water distribution and prevents too high water flows in specific areas. A typical grain distribution exists due to the frequent backwashing. Grains with smaller diameter are dominant in the upper part of the sand layer while coarse grain dominates in the lower parts.

## Parameters

- 1、Filter speed: 8–12m/h;
- 2、Back washing intensity: 9–15L/s m<sup>2</sup>;
- 3、Back washing time: 5–7 min;
- 4、Inlet pressure:  $\geq 0.4\text{Mp}$ ,  
back washing inlet pressure:  $\geq 0.2\text{Mpa}$ ;
- 5、Expansivity: 20%–50%.

QK-DAF DISSOLVED AIR FLOTATION



Introduction/Working principle

QK-DAF Dissolved Air flotation (DAF) is used to treat wastewater that contain free floating or emulsified oil, dissolved heavy metals, soaps ,surfactants ,and many other waste streams. With the features of lower power consumption, high treat efficiency, simple installation and maintenance , it is one of the most popular dissolved air flotation clarifier in China.

The removal is achieved by dissolving air in the water or wastewater under pressure and then releasing the air at atmospheric pressure in a flotation tank. The released air forms tiny bubbles which adhere to the suspended matter causing the suspended matter to float to the surface of the water where it may then be removed by a skimming device.

Our DAF unit designs utilize parallel plate packing material (e.g. lamellas) to provide more separation surface and therefore to enhance the separation efficiency of the unit.

Features

- 1、 Compact structure, less footprint;
- 2、 50% lower power consumption than other equipment;
- 3、 50% lower chemical consumption than other equipment;
- 4、 High consistency scum, up to 4%;
- 5、 Cleaner outlet water, SS removal rate ≥ 95%, insoluble COD removal rate ≥ 70%.

Parameter

型号 Model	QKDAF-10	QKDAF-25	QKDAF-50	QKDAF-80
处理量 ( m³/h ) Capacity	10	25	50	80
尺寸L*B*H(mm) Dimension	4000 X 2000 X 2250	6000 X 2500 X 2250	8000 X 2800 X 2550	9000 X 3000 X 2550
回流水泵kw Water return pump	4	5.5	7.5	11
刮沫机功率kw Scraping unit motor	0.37	0.37	0.55	0.75
空压机功率kw Air compressor motor	1.5	1.5	2.2	3

## QK-TL ACTIVATED CARBON FILTER



### Introduction

Activated carbon filter is mainly used to remove impurities in water because activated carbon has strong adsorption capacity. Activated carbon filter can absorb organic substances, colloidal particles, microorganisms, chlorine, bromine, iodine and other non-metallic substances in water.

### Application

Activated carbon filter is widely used in water treatment projects in food, medicine, electronics, chemical and other industries. It is not only a subsequent equipment in the reclaimed water treatment process, but also a pretreatment equipment in the water treatment process. It can effectively prevent pollutants in the water from contaminating subsequent equipment and improve the smell and color of water.

75-76

## QK-CY OZONE GENERATOR

### Introduction

Water treatment ozone generator can decompose the refractory organic matter, improve the biodegradability of sewage, kill the bacteria and viruses with strong chlorine resistance, and also have the effect of decolorization and deodorization, and increase the dissolved oxygen and improve the water quality.

### Application

- 1、Municipal Water Supply;
- 2、Printing And Dyeing Wastewater;
- 3、Municipal Sewage Treatment;
- 4、Petrochemical Wastewater;
- 5、Flue Gas Denitrification;
- 6、Whiten Of Pulp;
- 7、Sludge Reduction;
- 8、Space Disinfection;
- 9、Scientific Research And Application;
- 10、Soil Remediation;
- 11、Food And Beverage;
- 12、Aquaculture;
- 13、Cooling Tower Circulating Water;
- 14、Landfill Leachate;
- 15、Pool Leisure;
- 16、Reclaimed Water Reused;
- 17、Chemical Synthesis.





# QK-FT ADVANCED FENTON SYSTEM

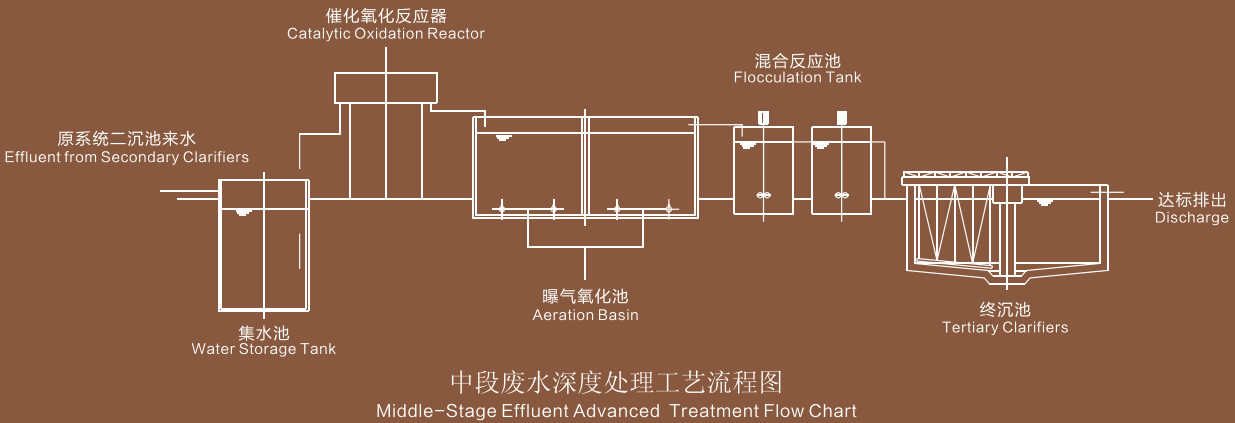


## Working Principle

QK-FTAdvanced Fenton oxidation reaction process consist of chemical mixing tank and reaction tank, linked by a overflow channel , wastewater inlet into chemical fixing tank and outlet from reaction tank. A aeration device is installed on bottom of chemical fixing tank, a dosing pipe installed above chemical fixing tank and linked to composite oxidant dosing can. A mixer is installed in reaction tank, to help fully mixing . The effluent from reaction tank flow to clarifiers tank for solid-liquid separation.

## Process flow

Effluent from Secondary Clarifiers → Water Storage Tank → Catalytic Oxidation Reactor → Aeration Basin  
→ Flocculation Basin → Tertiary Clarifiers → Discharge



## Introduction

QK-FTAdvanced Fenton oxidation reaction process developed from traditional Fenton reactor by improving technique and optimizing process design. It eliminate shortage of more space occupied and high founding & running cost , replace traditional oxidant to composite oxidant which is more efficiency.Aim to meet continuous increasing discharge standard , the high-tech QK-FT was created, and widely used for pretreatment or tertiary treatment of all kinds of industrial wastewater treatment plants.

## 运行现场图片 On-site Picture



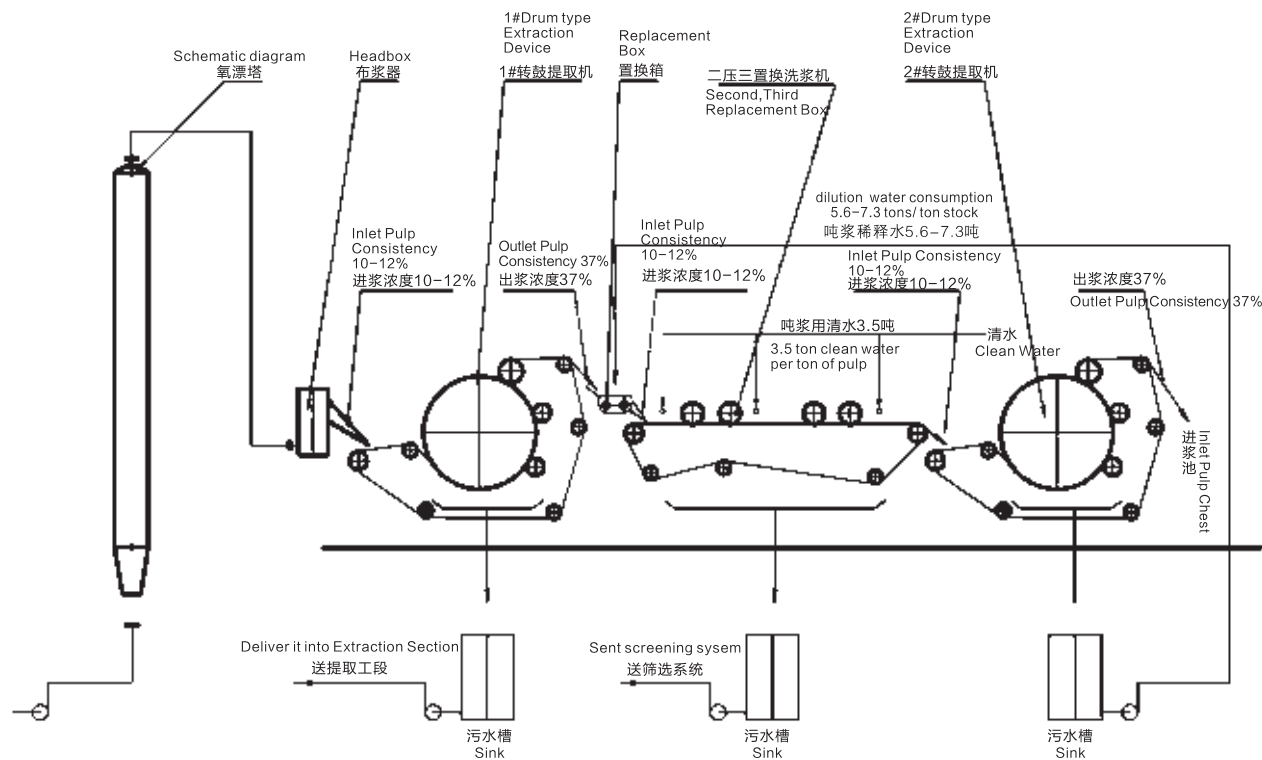
QK-SERIES BLACK LIQUOR EXTRACTING MACHINE



Introduction/Features

- QK-series black liquor extracting machine is a patented product developed by our company.it is widely used in the liquid-solid separation process of papermaking,chemical,printing and dyeing,chemical,food,beverage,pharmaceutical and other industries etc.
- 1、High extraction rate of black liquor: single-stage extraction rate reached 75 percent, two series up to 85 percent , three series of up to 90% or more;
  - 2、High pulp dry : The high pulp dryness: the ratio of dry pulp increased by 8 percent to 10 percent spiral squeeze pulp, up to 30% to 45%;
  - 3、Remarkable energy-saving effect : power consumption is sixth of the same scale of spiral squeeze pulp production, the savings of annual electricity savings more than 20 million ;
  - 4、Less investment, simple installation, easy operation, no noise, low maintenance.

Schematic diagram of the pulp washing system after oxygen bleaching

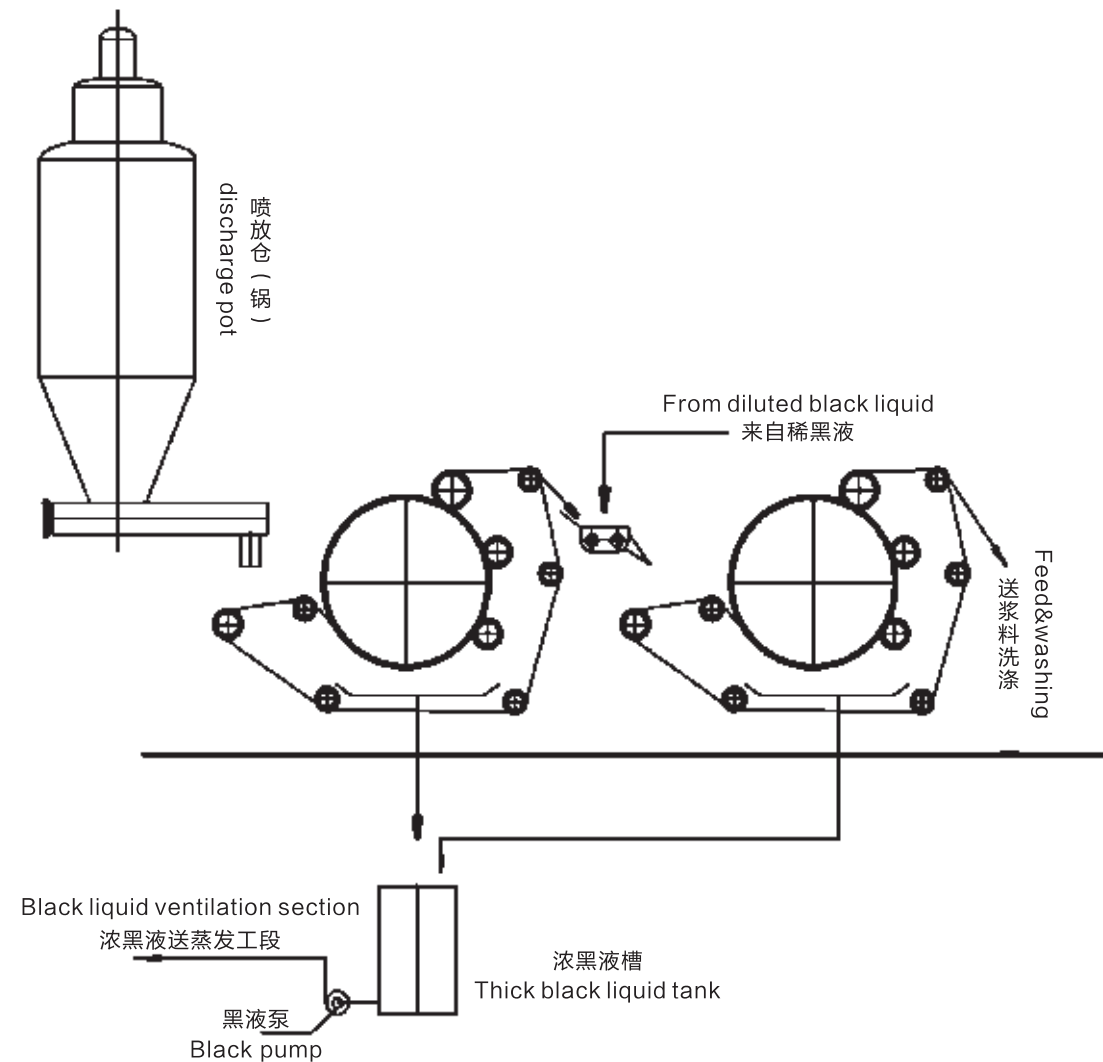


Parameter

型号 Item No	QK-1000	QK-1500	QK-2000	QK-2500	QK-3000	QK-3500
进浆浓度% Feeding concentration	≥ 8					
出浆浓度% Output slurry concentration	30-45					
提取率% Extraction rate	单级Single-step≥75 双级twin-stage≥85 三级three-level≥90					
草浆 Straw Pulp	20-30	30-40	45-60	60-70	70- 100	120-150
棉浆 Cotton pulp	30-35	40-60	90-100	120-140	150-180	200-250
主机功率 ( kw ) Motor Power(kw)	4.5	5.5	11	11	15	22
外形尺寸 ( m ) Equipment Size(m)	2×2.5×2.2	2.5×3×2.2	4.2×4.4×3	4.2×4.9×3	4.8×5.6×3.3	5.8×6.4×3.9

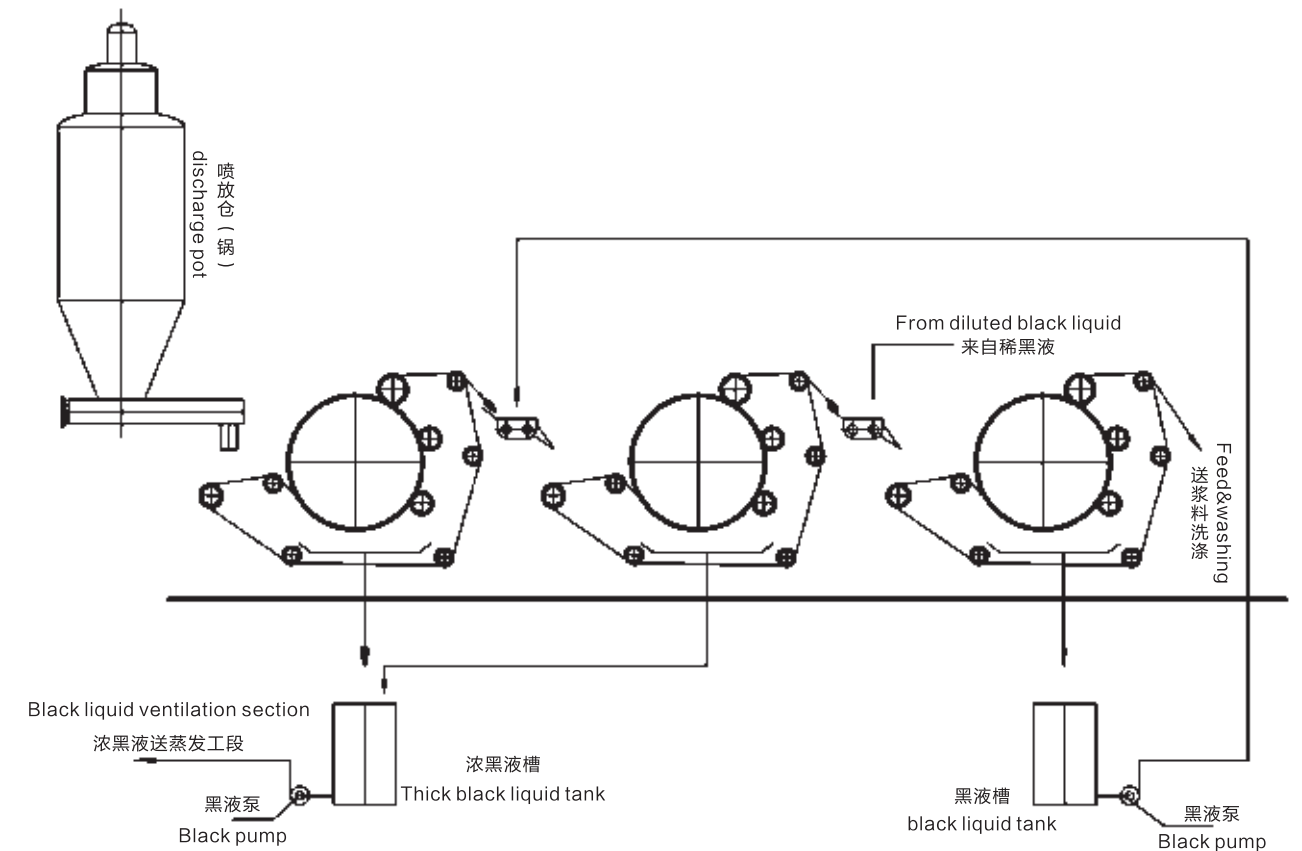
## 2 SERIES

1. This machine is the high concentration of extraction equipment,can be standalone usde in tandem, can also be combined with the use of lowconcentration extraction equipment,such as vacuum washer,horizontal belt washer,spiral net belt pulp washing machine,etc.,can play complement each other,better results can improve the extraction rate of 5 percent,significantly reducing COD load of the middle of the water for more than 10% .
2. As a high dehydration concentration of energy-saving equipment,the aircraft used in the dehydration heat dispersion before the pulp is more suitable,can save 15% of steam consumption, saving power consumption and significantly improved heat dispersion.
3. The dryness of Tcotton pulp can reach 40% of dry pulp,wood pulp is 35%,bagasse pulp is 35%,straw pulp dryness is 33%,so can be widely used in professional pulp companies,saving shipping costs.



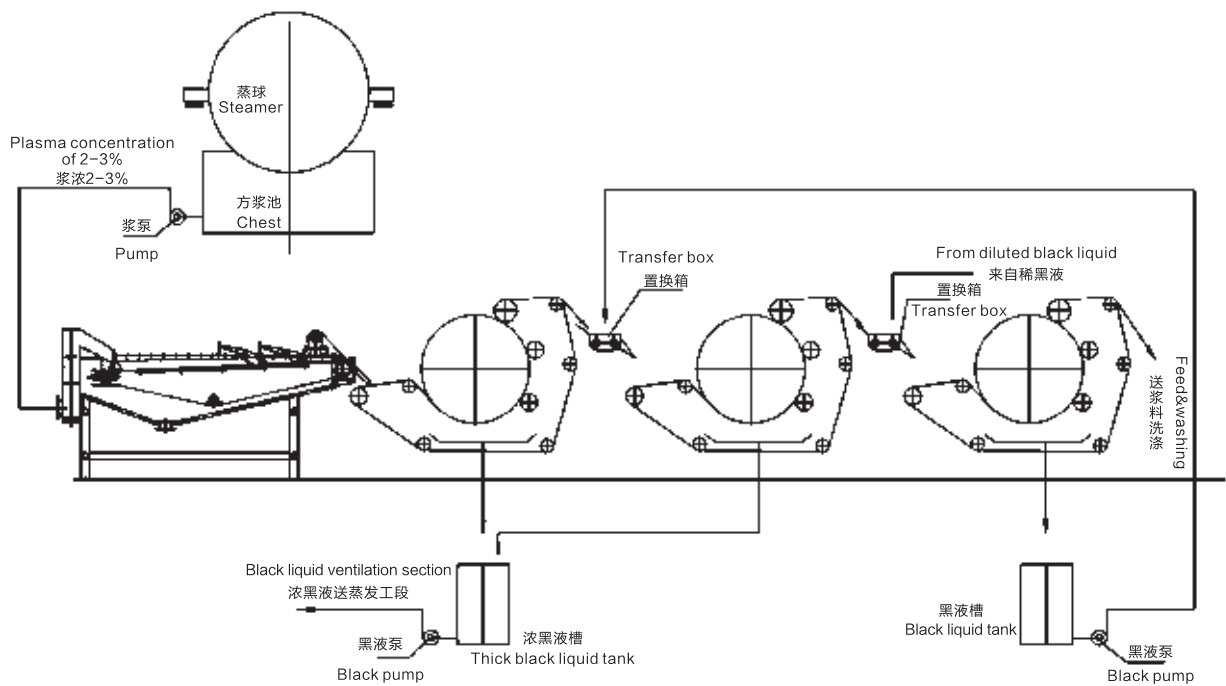
## 3 SERIES

1. This machine is the high concentration of extraction equipment,can be standalone usde in tandem, can also be combined with the use of lowconcentration extraction equipment,such as vacuum washer,horizontal belt washer,spiral net belt pulp washing machine, etc. can play complement each other,better results can improve the extraction rate of 5 percent,significantly reducing COD load of the middle of the water for more than 10% .
2. As a high dehydration concentration of energy-saving equipment,the aircraft used in the dehydration heat dispersion before the pulp is more suitable,can save 15% of steam consumption, saving power consumption and significantly improved heat dispersion.
3. The dryness of Tcotton pulp can reach 40% of dry pulp,wood pulp is 35%,bagasse pulp is 35%,straw pulp dryness is 33%,so can be widely used in professional pulp companies,saving shipping costs.
4. The machine single extraction rate is 75%,two-plane extraction rate is 85%,three machine extraction rate is 90%.



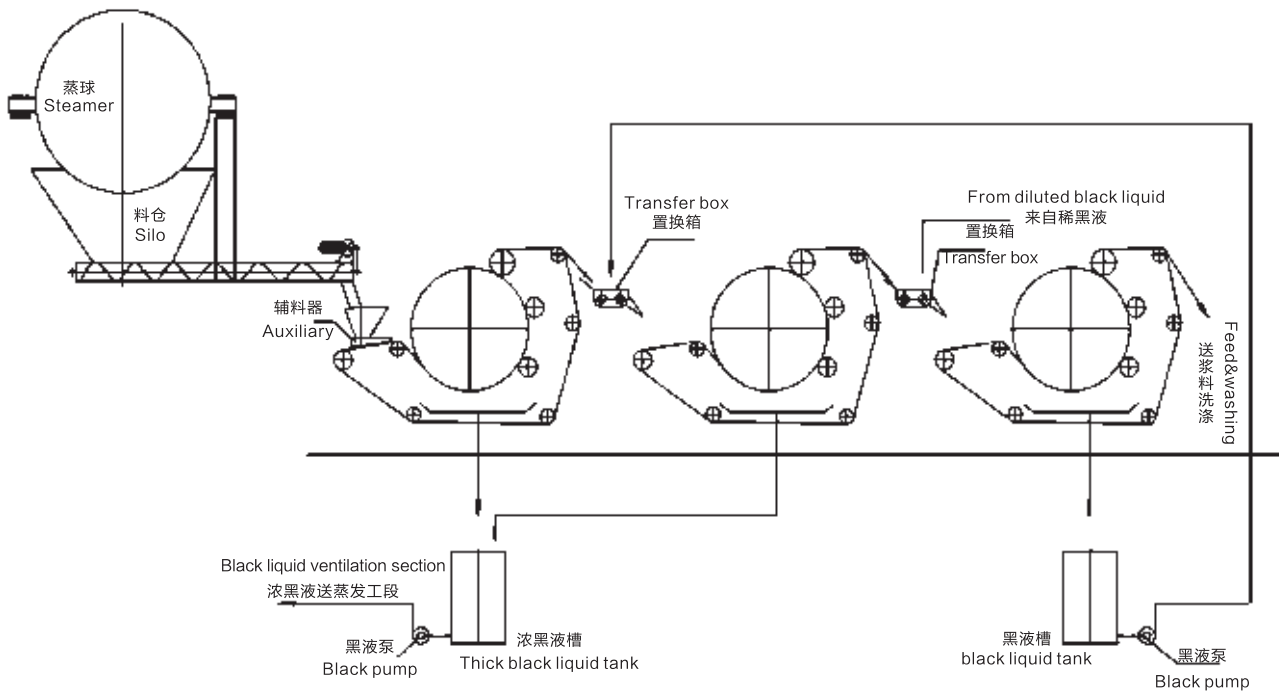


COTTON FLOW CHART EXTRACTION MACHINE 3 SERIES



- 1、 This process can be used in transformation of the old cotton enterprise project, the advantage is the high degree of dry pulp, energy, water, easy to operate.
- 2、 The device can be used in pulp bleaching of cotton after washing, concentration, its effect is better, can significantly improve product quality.
- 3、 This process single extraction rate is 75%, two-plane extraction rate is 85%,95% of three-machine extraction.

COTTON FLOW CHART EXTRACTION MACHINE 3 SERIES



- 1、 This technology is the best technique cotton and being widely used, its significant advantage is the high concentration of black liquor extraction, high temperature black liquor, a pulp dry-degree, low water consumption, easy operation and energy-efficient.
- 2、 This process can be used in a Recovery of the manufactures and the use of black liquor to make other products, resource utilization for the black liquor to provide a favorable condition.
- 3、 This process single extraction rate is 75%,two-plane extraction rate is 85%,three machine extraction rate is 95%.

# QK-BS ROTARY DECANTER

## Introduction

QK-BS rotary decanter is widely used to various intermittent circulatory activated sludge process of sewage treatment system (such as SBR, ICEAS and CASS). The CASS process has been widely used in municipal sewage treatment and some industrial (e.g. beer, food, beverage, pharmaceutical etc.) wastewater treatment.

## Features

- 1、Intelligent drowning, the closer to the sludge, the slower the drowning speed and the better the effluent quality;
- 2、Double-layer limit switch and safety alarm device to ensure greater safety;
- 3、Strong adaptability: By setting and adjusting the relevant parameters of the inverter through internal parameters, the operating speed and range of the decanter can be adapted to various water quality and quantity;
- 4、Sealed rotary joint, flexible rotation, good sealing, sealing ring can be replaced without draining;
- 5、Stainless steel underwater parts, simple maintenance.



# QK-RO PURIFYING SYSTEM



## Introduction

The reverse osmosis(RO) water Purifying System is an equipment for purifying water with the action of pressure difference of semi

permeable membrane. RO membranes can effectively remove majority of organics, harmful substances, bacteria, particulates etc. RO system is widely used in water treatment, purification for tap water, well water, underground water, borehole water, brackish water and seawater, pure water and ultra-pure water production, apply in power stations, electronic industries, electroplating industry, medicine manufactories, hotel, communities, villas, and medical treatment, cosmetic products, drinking bottled water factories, sachet pouch water workshops, beverage factories, hospitals, edible ice macking factories. It is a key equipment for pure water plant.

## Parameters

Model	Capacity	Power	Membrane housing	Quartz sand filter, activated Carbon filter	Activated carbon	Quartz sand
QKRO-500	500 L/Hr	1.5KW	4040stainless steel	φ 250 × 1450 FRP 2pcs	25KG	100KG
QKRO-1000	1000L/Hr	2.5KW	4040 stainless steel 4pcs	φ 350 × 1450 FRP 3pcs	50KG	150KG

HIGH DESALINATION NANOFILTRATION MEMBRANE ELEMENT



Introduction

High desalination nanofiltration membrane elements are suitable for decolorization and COD removal treatment of waste water such as landfill leachate, papermaking, printing and dyeing, and are applied in salt separation treatment processes such as the preparation of direct drinking water, mineral water, low-pressure boiler softened water, and material separation.

FOULING RESISTANT RO MEMBRANE ELEMENT



Introduction

The anti pollution reverse osmosis membrane element is suitable for the application of sewage treatment and reclaimed water reuse projects in power, steel, electroplating, petrochemical, coal chemical, printing and dyeing, papermaking, garbage leachate, etc. with a salt concentration of less than 8000mg/L.

Features

- Wide flow channel, high pollution resistance
- High cleaning recovery and long service life

Parameters

型号 Model	有效膜面积ft <sup>2</sup> (v) Active Membrane Area ft <sup>2</sup> (m <sup>2</sup> )	日产水量GPD(m <sup>3</sup> /d) Permeate Flow GPD(m <sup>3</sup> /d)	稳定脱盐率(%) Stable Rejection Rate (%)	测试液 Solution Type
NF1-8040	400(37.2)	10000(37.8) 9000(34.0)	50-70 >98	NaCl MgSO <sub>4</sub>
NF1-4040	85(7.9)	2200(8.3) 1800(6.8)	50-70 >98	NaCl MgSO <sub>4</sub>

测试条件 Testcondition

测试液 Concentration of Solution (NaCl)	水温( °C) Temperature ( °c)	pH值 pH Value	测试压力psi(MPa) Operating Pressure psi(MPa)	回收率 (%) Recovery Rate (%)
500mg/L NaCl	25	7.5-8	70(0.48)	15
2000mg/L MgSo4	25	6.5-7	70(0.48)	15

产水量浮动区间:15% The permeate flow of single membrane element may vary with in +15%.

Parameters

型号 Model	有效膜面积ft <sup>2</sup> (v) Active Membrane Area ft <sup>2</sup> (m <sup>2</sup> )	日产水量GPD(m <sup>3</sup> /d) Permeate Flow GPD(m <sup>3</sup> /d)	稳定脱盐率(%) Stable Rejection Rate (%)
BW-8040FR	365(33.9)	9500(35.9)	99.7
BW-4040XLFR	400(37.2)	10500(39.7)	99.7

测试条件 Testcondition

测试液 Concentration of Solution (NaCl)	水温( °C) Temperature ( °c)	pH值 pH Value	测试压力psi(MPa) Operating Pressure psi(MPa)	回收率 (%) Recovery Rate (%)
2000mg/L NaCl	25	7.5-8	225(1.55)	15

产水量浮动区间:15% The permeate flow of single membrane element may vary with in +15%.



BRACKISH WATER RO MEMBRANE ELEMENT



Introduction

Conventional reverse osmosis membrane elements for brackish water are suitable for desalination treatment of surface water, groundwater, and reclaimed water with a salt concentration of less than 5000mg/L; Its application fields cover industries such as electronics, power, steel, pharmaceuticals, thermoelectric, petrochemical, and coal chemical.

Features

- High desalination rate and stability
- High economy and wide applicability

ULTRA-LOW PRESSURE RO MEMBRANE ELEMENT



Introduction

Conventional ultra-low pressure reverse osmosis membrane elements are suitable for desalination treatment of municipal tap water and groundwater with a salt concentration of less than 2000mg/L. Widely used in residential differentiated water supply systems, purified water preparation plants, industrial or food production, and other fields.

Features

- High yield water volume and high reliability
- High economy and wide applicability

Parameters			
型号 Model	有效膜面积ft <sup>2</sup> (v) Active Membrane Area ft <sup>2</sup> (m <sup>2</sup> )	日产水量GPD(m <sup>3</sup> /d) Permeate Flow GPD(m <sup>3</sup> /d)	稳定脱盐率(%) Stable Rejection Rate (%)
BW-8040	400(37.2)	10500(39.7)	99.6
BW-4040	85(7.9)	2400(9.1)	99.6

测试条件 Testcondition

测试液 Concentration of Solution (NaCl)	水温( °C) Temperature ( °c)	pH值 pH Value	测试压力psi(MPa) Operating Pressure psi(MPa)	回收率 (%) Recovery Rate (%)
2000mg/L NaCl	25	7.5-8	225(1.55)	15

产水量浮动区间:15% The permeate flow of single membrane element may vary with in +15%.

Parameters			
型号 Model	有效膜面积ft <sup>2</sup> (v) Active Membrane Area ft <sup>2</sup> (m <sup>2</sup> )	日产水量GPD(m <sup>3</sup> /d) Permeate Flow GPD(m <sup>3</sup> /d)	稳定脱盐率(%) Stable Rejection Rate (%)
ULP-8040HF	400(40.9)	12500(47.3)	99.50
ULP-4040HF	100(9.3)	2700(10.2)	99.50

测试条件 Testcondition

测试液 Concentration of Solution (NaCl)	水温( °C) Temperature ( °c)	pH值 pH Value	测试压力psi(MPa) Operating Pressure psi(MPa)	回收率 (%) Recovery Rate (%)
1500mg/L NaCl	25	7.5-8	150(1.03)	15

产水量浮动区间:15% The permeate flow of single membrane element may vary with in +15%.

POLYALUMINUM CHLORIDE



A: 饮水级聚合氯化铝  
Drinking water grade polyaluminum chloride



B:工业级聚合氯化铝  
Industrial grade polyaluminum chloride

Introduction

The raw materials for drinking water grade polyaluminum are hydrochloric acid, calcium aluminum powder, and aluminum hydroxide, which are refined through high-temperature and high-pressure reaction polymerization. The product is refined by high-temperature and high-pressure polymerization reaction of hydrochloric acid, calcium aluminate powder, and bauxite.

Usage

Widely used in drinking water, urban water supply and drainage, and industrial water purification. Dilute the product into a 10% -20 % aqueous solution (calculated by weight of the product), and conduct small tests based on different water quality and usage to find the optimal dosage before using it in large quantities.

技术参数 Parameters

指标名称 Index name			A 测试数据 Test data	
			液体 liquid	固体 solid
氧化铝(Al <sub>2</sub> O <sub>3</sub> )含量	Aluminum oxide (Al <sub>2</sub> O <sub>3</sub> ) content	% ≥	10	29
盐基度	Basicity	%	40-90	
密度 ( 20℃ )	Density (20 ℃)	g/cm <sup>2</sup>	1.12	-
水不溶物含量	Water insoluble content	% ≤	0.1	0.3
Ph ( 1%水溶液 )	Ph (1% aqueous solution)	% ≤	3.5-5.0	
砷 ( As ) 含量	Arsenic (As) content	% ≤	0.0002	
铅 ( Pb ) 含量	Lead (Pb) content	% ≤	0.001	
镉 ( Cd ) 含量	Cadmium (Cd) content	% ≤	0.0002	
汞 ( Hg ) 含量	Mercury (Hg) content	% ≤	0.00001	
六价铬 ( Cr <sup>6+</sup> ) 含量	Hexavalent chromium ( Cr <sup>6+</sup> ) content	% ≤	0.0005	

B 测试数据 Test data	
液体 liquid	固体 solid
6	18-28
30-95	
1.1	-
0.5-5	1.5-8
3.5-5.0	
0.005	0.005
0.002	0.002
0.002	0.006

CATIONIC POLYACRYLAMIDE



Introduction

Cationic polyacrylamide series products are linear polymer polymers that are copolymerized by cationic monomers(DM、DMC、CPF、MDAAC、DMAEMA. etc.) and acrylamide through granulation, drying, and crushing. It has the functions of decolorization, adsorption, turbidity removal, adhesion, sludge dewatering, etc.

Product feature

- 1、Sludge dewatering agent: Activated sludge method is commonly used for urban and industrial wastewater treatment. Biochemical sludge is often a highly hydrophilic colloid with high organic content, making it extremely difficult to dehydrate. Using cationic polyacrylamide for treatment has the advantages of low dosage, high dehydration efficiency, and easy separation.
- 2、Paper making additives: In the paper making industry, they can directly interact with inorganic salt ions, fibers, and other organic polymers to form electrostatic bridges to enhance the physical strength of the paper and reduce fibers or cations. Reduce the loss of fibers or materials, accelerate water filtration, and play a role in strengthening, retention, and filtration. It can also be treated with dry white water, which can easily achieve significant flocculation effect during the deinking process.
- 3、Treatment of sewage and organic wastewater: This product exhibits cationic properties in acidic or alkaline media, which is extremely effective in flocculation and clarification of sewage with a large number of suspended particles carrying negative charges. Such as alcohol factory wastewater, brewery wastewater, monosodium glutamate factory wastewater, sugar factory wastewater, meat product factory wastewater, beverage factory wastewater, textile printing and dyeing factory wastewater, etc. For this type of waste water, cationic polyacrylamide is several times or tens of times more effective than anionic polyacrylamide, non ionic polyacrylamide, or inorganic salts.
- 4、Flocculant for water treatment in waterworks using rivers as water sources: low dosage, good effect, and low cost. Especially when combined with inorganic flocculants, the effect is better. It will become an efficient flocculant for water plants along the Yangtze River, Yellow River, Huai River, and other river basins.
- 5、Oilfield chemicals: such as clay anti swelling agents, thickeners for oilfield acidification, etc.

Parameters

Outer ring 外环	Molecular weight 分子量	Cationic degree 阳离子度%	Solid content 固含量% ≥	Effective PH value 有效PH值	Dissolution time 溶解时间
Entire iron(mass fraction %) 全铁含量 ( 按重量 )	200-1200	5-95	90	7-14	≤60分钟 ( minutes )

POLYMERIC FERRIC SULFATE-PFS

Action principle



- 1、Charge Neutralization: PFS has a strong charge neutralization effect on colloidal substances in water.
- 2、Viaduct Adsorption: the hydrolysis of PFS has an excellent adsorption effect on suspended solids in water.
- 3、Selective Adsorption: PFS has selective adsorption effect on dissolved substances.

Product feature

- 1、Polymeric Ferric Sulfate is a new type water treatment coagulant, and it is inorganic polymer iron salt, it is yellow powdery solid, easily soluble in water, 10% (by weight) of the solution for red-brown transparent solution, hygroscopic.
- 2、Our polymeric ferric sulfate was produced by advanced spray drying method, and has higher Fe3+ content, high effective components, it is very easy to be dissolved in water, and the insoluble substance is very low, it has strong removal capacity for turbidity COD, BOD, heavy metal and etc, has good decolorizing effect, strong flocculation capability, phosphorus removal, selenium removal, sludge thickening, struvite control and odor control, and etc.
- 3、Our polymeric ferric sulfate is better than other ordinary ferric sulfate and polymerized aluminum sulfate, polyaluminum chloride purifying agent. Our ferric sulfate is a high-tech product.
- 4、It is a optimal choice for drinking water production, wastewater treatment, phosphorus removal applications, struvite control and sludge conditioning.
- 5、It can be used in discolouring, dehydrating, deodorizing, degreasing, sterilizing, discarding heavy metal iron, radioactive substance and carcinogens in the water, and eliminating COD, BOD, and color.

MULTICOMPONENT COMPOSITE PLASMA PHOTOCATALYTIC WASTE GAS TREATMENT EQUIPMENT



Introduction

Non toxic and without any side effects. Completely surpassing traditional air purifiers such as ozone, it can continuously sterilize and remove dust in an environment with people present, and has no toxic side effects on the human body. It can widely intercept and kill various bacteria in the air. Tests have shown that the killing rate of Legionella, Staphylococcus aureus, Bacillus subtilis, black mutant spores, and natural bacteria is over 99.9%, effectively removing inhalable particles, and achieving a cleanliness level of 10000 to 100000.

Eliminating the odor of harmful gases from pollution, primary electrons accelerate in an electric field and collide with oxygen molecules in the air. When the energy exceeds the ionization potential of oxygen molecules, they rapidly ionize. The oxygen molecules that lose electrons become positive oxygen ions (O2+), and the released electrons combine with another neutral oxygen molecule to form negative oxygen ions (O2-). The result is the two-stage differentiation of oxygen ions and the adsorption of intermediate oxygen molecules to form ion groups of O2+, O2-, O2 and other oxygen aggregates, which have extremely strong oxidizing properties and can oxidize and decompose harmful components in polluted air into harmless products and water in a short period of time;

Parameters					
Item 项目	Specification 参数	Test Result 结果	Item 项目	Specification 参数	Test Result 结果
Entire iron(mass fraction %) 全铁含量（按重量）	≥19.5	21.3	Cr6+ (mass fraction %) 六价铬	≤0.005	0.0002
basicity% 盐基度	8-16	12	Pb (mass fraction %) 铅	≤0.001	0.0002
Water insoluble % 水不溶物	≤0.5	0.15	Ag (mass fraction %) 银	≤0.005	0.0009
PH value(10g/L solution) PH值	2.0-3.0	2.3	Hg (mass fraction %) 汞	≤0.0002	0.00001
As (mass fraction %) 砷	≤0.001	0.0002	Se (mass fraction %) 硒	≤0.001	0.0004
Cd (mass fraction %) 镉	≤0.0005	0.00005	Reducing material(count by Fe <sup>2+</sup> %) 还原物（以Fe <sup>2+</sup> ）	≤0.15	0.01



QK-BD INDUSTRIAL PULSE BAG FILTER



Introduction

Pulse bag filter is a dry dust filter device. It is suitable for capturing fine, dry, non-fibrous dust. It is composed of ash bucket, upper box, middle box, lower box and so on. The upper, middle and lower box are divided into chambers. When working, the dusty gas enters

the ash bucket from the inlet air duct, the coarse dust particles directly fall into the bottom of the ash bucket, the fine dust particles enter the middle and lower boxes upward with the airflow turning point, the dust accumulates on the outer surface of the filter bag, and the filtered gas enters the upper box to the clean gas collection tube – exhaust air duct, and is discharged to the atmosphere by the exhaust fan.

The cleaning process is to cut off the chamber's clean air outlet duct first, so that the cloth bag of the chamber is in a state of no air flow through (separate chamber to stop the air cleaning). Then the pulse valve is opened and the compressed air is used for pulse spraying cleaning. The closing time of the cut-off valve is enough to ensure that the dust removed from the filter bag after spraying will settle to the ash hopper, so as to avoid the dust from the surface of the filter bag and then attached to the surface of the adjacent filter bag with the air flow, so that the filter bag can be cleaned. In addition, the automatic control of the exhaust valve, pulse valve and ash discharge valve is carried out by the programmable controller.

QK-ST SPRAY TOWER



Introduction

The exhaust gas is introduced into the purification tower by the wind pipe. Through the packing layer, the exhaust gas and the absorption liquid are fully exposed to the absorption and neutralization reaction of the gas-liquid two phase. After the exhaust gas is purified, the fan is discharged into the atmosphere by the dehydration of the mist removal plate and the mist eliminator. The absorption liquid is pressurized by the pump at the bottom of the tower and then sprayed down at the top of the tower. Finally, it is recycled to the bottom of the tower for recycling. The purified acid mist exhaust gas is lower than the national emission standard.

Parameters

Model number	QK-BD24	QK-BD36	QK-BD48	QK-BD60	QK-BD72	QK-BD84	QK-BD96	QK-BD120
Filter area (m <sup>2</sup> )	18	27	36	45	54	63	72	90
Bag quantity (pc)	24	36	48	60	72	84	96	120
Pulse valve (pc)	4	6	8	10	12	14	16	20
Air volume(m <sup>3</sup> /h)	2160-4300	3250-6480	4320-8630	5400-10800	6450-12900	7550-15100	8650-17300	10800-20800
Dimension (L × W × H)	1025 × 1678 × 3700	1425 × 1678 × 3696	1823 × 1678 × 3676	2225 × 1678 × 3676	2625 × 1678 × 3676	3075 × 1678 × 3676	3949 × 1678 × 3676	4389 × 1678 × 3676

Parameters

Model(mm)	Air volume(m <sup>3</sup> /h)	Pump out/in pipe diameter(mm)	Power(kw)	Weight(kg)
QK-ST800*3500	2000-3000	32/25	0.75	200
QK-ST1000*4000	4000-5000	40/32	1.5	450
QK-ST1200*4000	6000-8000	40/32	1.5	600
QK-ST1500*4200	10000-15000	50/40	2.2	800
QK-ST2000*5000	20000-25000	65/50	4	950
QK-ST2500*6000	30000	80/65	5	1200

QK-WI WASTE INCINERATOR



Features

- 1、The incinerator is widely used in all kinds of waste treatment, Hospitals, Hotels, Industry, Garbage disposal, etc.
- 2、The Incinerator can reduce the solid mass of the original waste by 80 – 85% and the volume reduced by 95 – 96%.
- 3、The highest temperature of incinerator running can reach 1100–1300 degrees Celsius, which can achieve the effect of sterilization and disinfection.
- 4、There will be no smoke, no smell, no pollution after waste be burning.
- 5、It features unique and advanced merits with compact size, high burning effect, reasonable burning technology, high degree of non-harm etc. It is an ideal choice for waste treatment of hospitals, hotels and various areas.

SPRAY TOWER



Introduction

The organic waste gas purification device is used to purify and treat organic waste gas at room temperature, high air volume, medium to low concentrations. The organic solvents that can be treated include benzene, ketones, alcohols, ethers, and their mixtures.

This device can be widely used for the purification of organic waste gas in the paint and coating workshops of production plants such as automobiles, shipbuilding, motorcycles, bicycles, household appliances, pianos, containers, etc. It can also be used in conjunction with flow lines such as shoe making adhesives, iron printing cans, chemical plastics, printing ink, cables, enameled wires, etc.

Parameters

Model	QKWI-20	QKWI-30	QKWI-50	QKWI-100	QKWI-150	QKWI-300	QKWI-500
Burning Capacity (3-6 times/day)	20-30 kg/time	20-30 kg/time	30-50 kg/time	50-100 kg/time	100-150 kg/time	200-300 kg/time	300-500 kg/time
Incinerator Size(m) (L*H*B)	1.6*1.3*1.75	1.45*0.9*2.55	1.8*1.15*3	1.8*1.4*3.4	2*1.4*3.5	2.2*1.4*3.8	3*2*4.8
Imputing Mouth Width(mm)	380*480	480*600	620*800	760*960	760*960	900*1100	1080*1280
Chimney External Diameter(mm)	280	280	280	300	300	400	460
Draught Fan	0.25kw	0.37kw	0.37kw	0.5kw	0.5kw	1.1kw	1.1kw
Voltage	220V	380V 220V	380V 220V	380V 220V	380V 220V	380V 220V	380V 220V
Weight(kg)	1800	3000	5000	7000	8200	10000	16000

Features

- 1、Fully automated control, easy to operate, energy-saving and labor-saving;
- 2、Flame free oxidation, high purification efficiency, safe and efficient equipment operation;
- 3、High catalytic activity, stable performance, and low resistance;
- 4、High performance activated carbon adsorbent with large specific surface area and good adsorption and desorption performance.

## QK - QJB Submersible Mixer

### Введение

Погружная мешалка QK-QJB используется на муниципальных очистных сооружениях и промышленных очистных сооружениях сточных вод для создания слабого тангенциального потока с силой, также может использоваться для создания потока для циркуляции, нитрификации, денитрификации и удаления фосфора.



Submersible Mixer



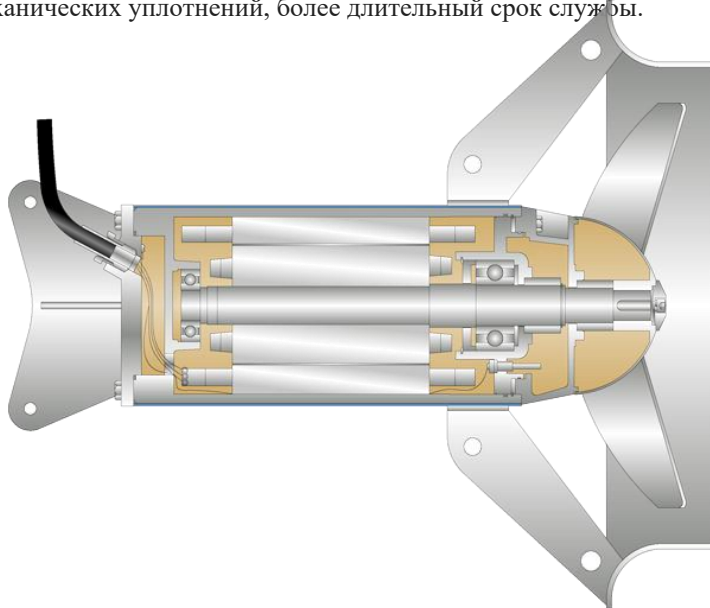
Submersible Mixer  
(with Dome)



Submersible Mixer  
(Low Speed)

### Функции:

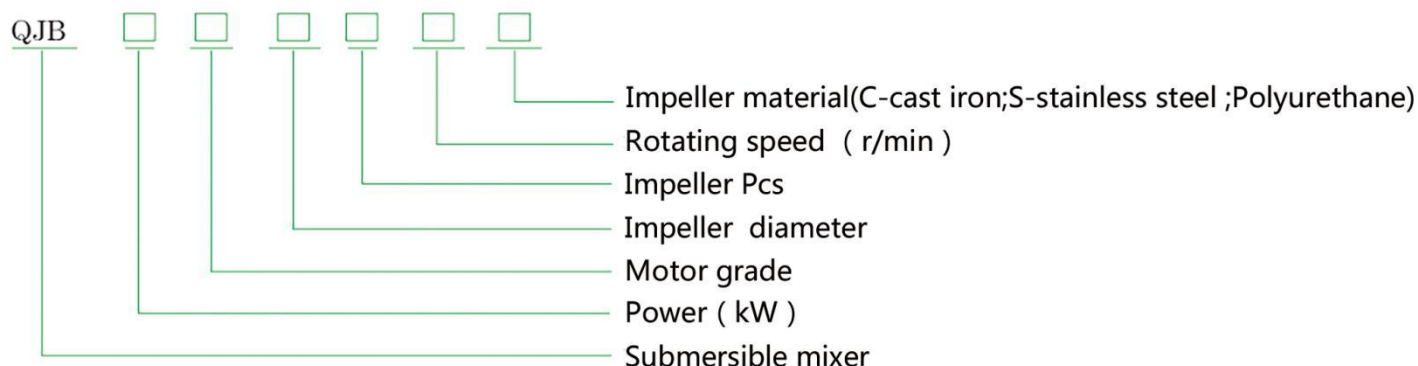
- a. Компактная конструкция, малый вес, простота эксплуатации и обслуживания, простая установка, большой пролет подъема;
- b. Самоочищающееся лезвие, предотвращающее налипание или засорение мусором;
- c. Использование вместе с аэратором снижает потребление энергии, высокая скорость аэрации, предотвращает образование осадка;
- d. Класс изоляции обмотки двигателя F, степень защиты двигателя IP68, импортные подшипники с постоянной смазкой, не требующие обслуживания, обнаружение утечки в камере, защита обмотки двигателя от перегрева;
- e. Два ряда независимых механических уплотнений, более длительный срок службы.





## Технические параметры

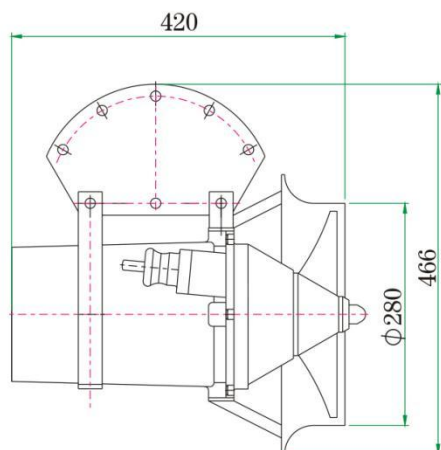
### Model Interpretation



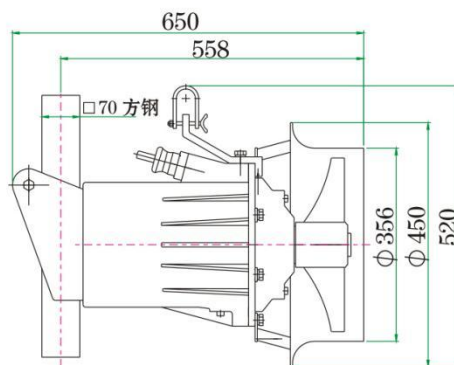
### PARAMETER

Model		Power	Current	Impeller Diameter	Rotating Speed	Weight	Force
		( kW )	( A )	( mm )	( r/min )	( kg )	( N )
High speed Mixer	QJB0.37/6-220/3-960/C/S	0.37	1.3	220	960	45	138
	QJB0.55/4-220/3-1480/C/S	0.55	1.6	220	1480	45	145
	QJB0.85/8-260/3-740/C/S	0.85	4	260	740	55	180
	QJB1.5/6-260/3-960/C/S	1.5	4	260	960	55	260
	QJB2.2/8-320/3-740/C/S	2.2	8	320	740	110	580
	QJB4/6-320/3-960/C/S	4	12	320	960	115	690
	QJB1.5/8-400/3-740/S	1.5	5.8	400	740	100	600
	QJB2.5/8-400/3-740/S	2.5	9	400	740	100	800
	QJB3/8-400/3-740/S	3	11	400	740	100	920
	QJB4/6-400/3-960/S	4	12	400	960	100	1200
	QJB4/12-620/3-480/S	4	14.2	620	480	184	1400
	QJB5/12-620/3-480/S	5	18.2	620	480	184	1800
	QJB7.5/12-620/3-480/S	7.5	28	620	480	229	2600
	QJB10/12-620/3-480/S	10	32	620	480	229	3300
Low Speed plug-flow	QJB15/12-620/3-480/S	15	43	620	480	260	4000
	QJB18.5/12-620/3-480/S	18.5	51	620	480	276	4400
	QJB22/12-620/3-480/S	22	60	620	480	290	5300
	QJB1.5/4-1100/2-65/P	1.5	4	1100	65	135	1100
	QJB2.2/4-1100/2-96/P	2.2	6	1100	96	135	1970
	QJB3/4-1100/2-115/P	3	8	1100	115	135	2410
	QJB4/4-1100/2-135/P	4	9	1100	135	135	2930
	QJB1.5/4-1400/2-55/P	1.5	4	1400	55	135	1200
	QJB2.2/4-1400/2-63/P	2.2	6	1400	63	135	1640
	QJB3/4-1400/2-87/P	3	8	1400	87	135	2180
	QJB4/4-1400/2-115/P	4	9	1400	115	135	2430
	QJB1.5/4-1600/2-48/P	1.5	4	1600	48	135	1320
	QJB2.2/4-1600/2-56/P	2.2	6	1600	56	135	1850
	QJB3/4-1600/2-65/P	3	8	1600	65	135	2140
	QJB4/4-1600/2-87/P	4	9	1600	87	135	2520
	QJB1.5/4-1800/2-42/P	1.5	4	1800	42	158	1480
	QJB2.2/4-1800/2-50/P	2.2	6	1800	50	162	1880
	QJB3/4-1800/2-56/P	3	8	1800	56	162	2360
	QJB4/4-1800/2-65/P	4	9	1800	65	165	2750
	QJB1.5/4-2200/2-38/P	1.5	4	2200	38	158	1400
	QJB2.2/4-2200/2-42/P	2.2	6	2200	42	162	1810
	QJB3/4-2200/2-48/P	3	8	2200	48	162	2140
	QJB4/4-2200/2-56/P	4	9	2200	56	165	2780
	QJB5/4-2200/2-65/P	5	13	2200	65	180	2960
	QJB1.5/4-2500/2-36/P	1.5	4	2500	36	170	1430
	QJB3/4-2500/2-38/P	3	8	2500	38	175	2090
	QJB4/4-2500/2-42/P	4	9	2500	42	185	2850
	QJB5/4-2500/2-56/P	5	13	2500	56	205	3090
	QJB7.5/4-2500/2-65/P	7.5	17	2500	65	210	3980

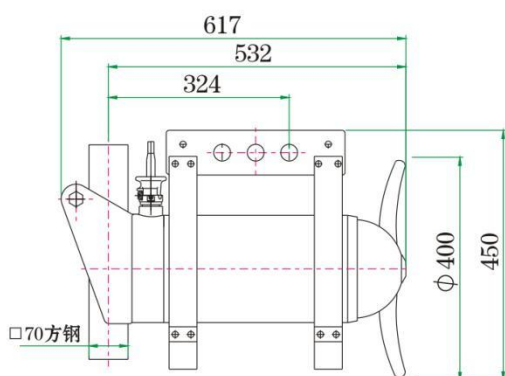
## Размеры



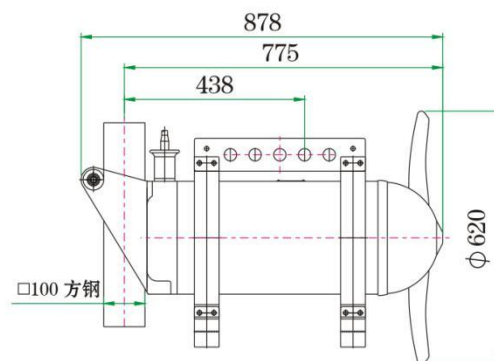
QJB0.85/8-260/3-740/C/S  
QJB1.5/6-260/3-960/C/S



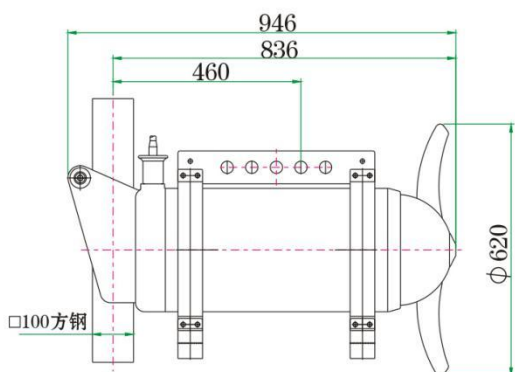
QJB2.2/8-320/3-740/C/S  
QJB4/6-320/3-960/C/S



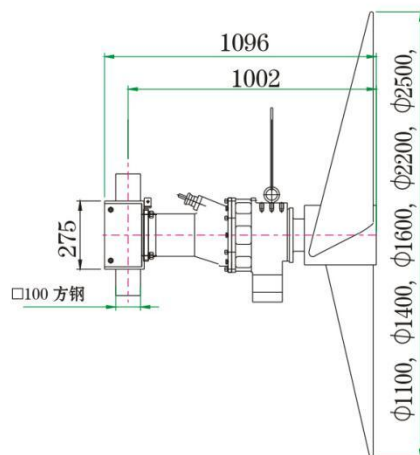
QJB1.5/8-400/3-740/S  
QJB2.5/8-400/3-740/S  
QJB3/8-400/3-740/S  
QJB4/6-400/3-960/S



QJB4/12-620/3-480/S  
QJB5/12-620/3-480/S

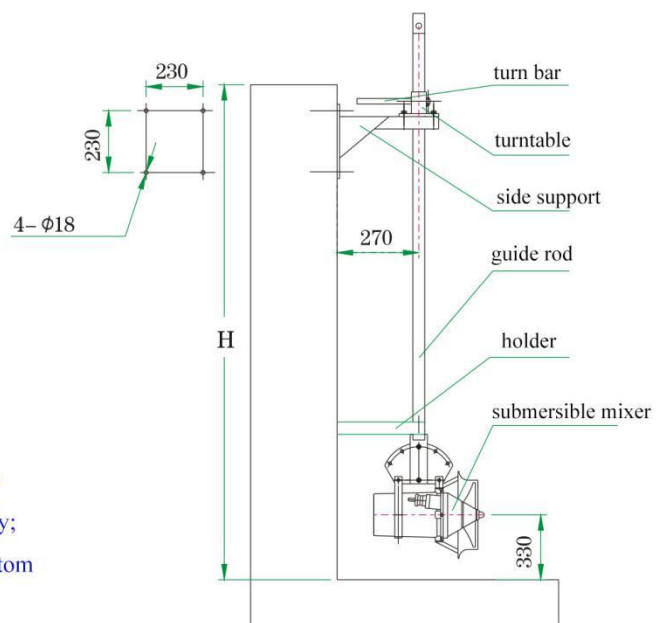


QJB7.5/12-620/3-480/S  
QJB10/12-620/3-480/S



low speed submersible mixer

## Installation System I -1

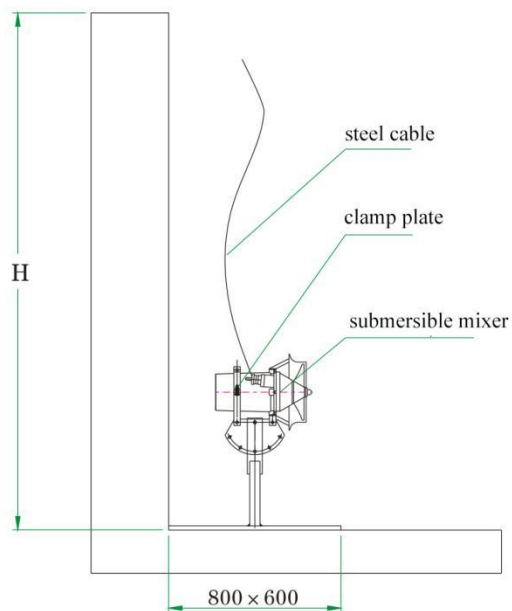


Note:

1. Tank depth < 3M;
2. The guide rod length 3 meters;
3. The direction and height can be adjusted horizontally and vertically;
4. Fixed to side wall and tank bottom with expansion bolts.

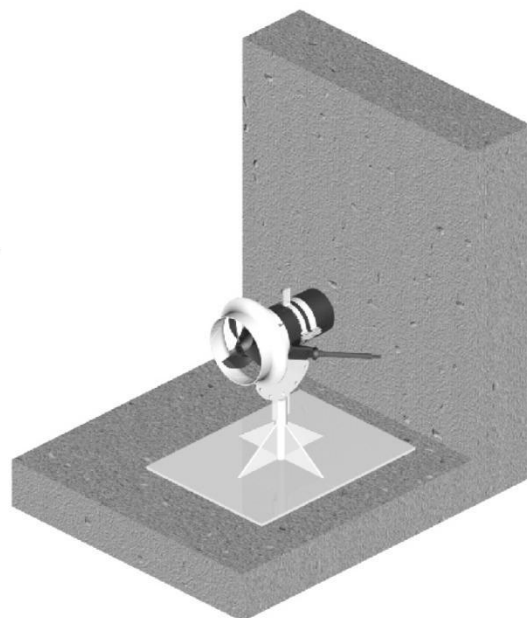


## Installation System I -2



Note:

1. Tank depth > 3M;
2. Fixed to side wall and tank bottom with expansion bolts.
3. The direction can be adjusted horizontally .

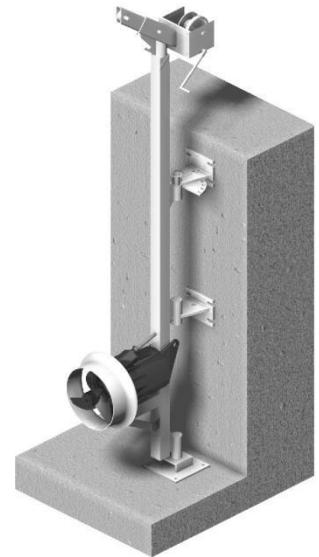
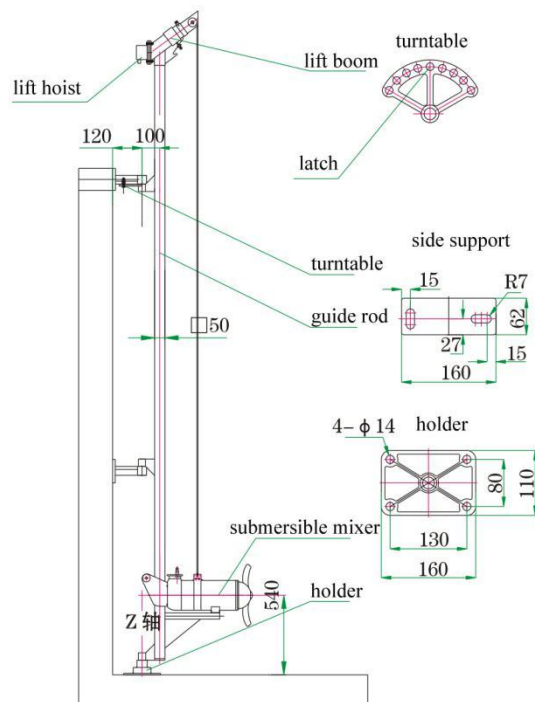




## Installation System II

### Note:

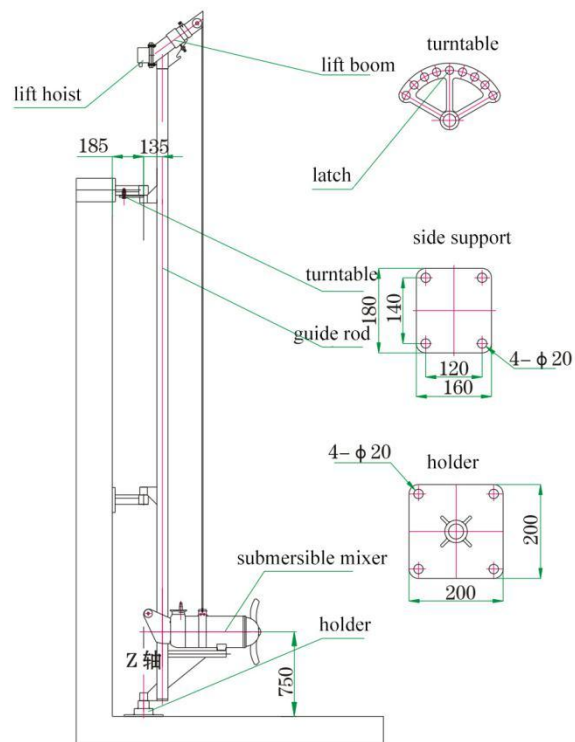
1. The turntable latch rotates around the Z axis in the horizontal direction
2. When guide rod length > 5 meters, need an extra side support.
3. Fixed to side wall and tank bottom with expansion bolts.



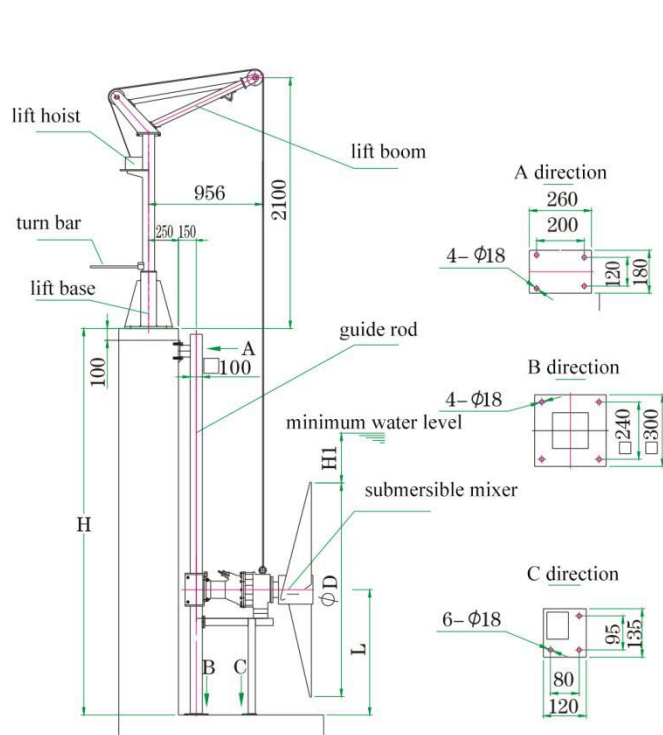
## Installation System III

### Note:

1. The turntable latch rotates around the Z axis in the horizontal direction
2. When guide rod length > 5 meters, need an extra side support.
3. Fixed to side wall and tank bottom with expansion bolts.

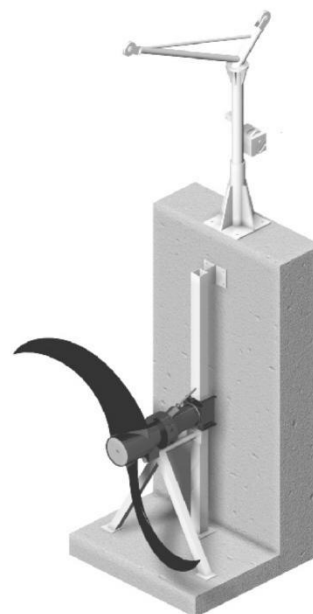


## Installation System IV



Note:

1. Fixed to side wall and tank bottom with expansion bolts.



Φ D	L	H1
Φ 1100	700	1000
Φ 1400	850	900
Φ 1600	950	900
Φ 1800	1050	800
Φ 2200	1250	800
Φ 2500	1400	800

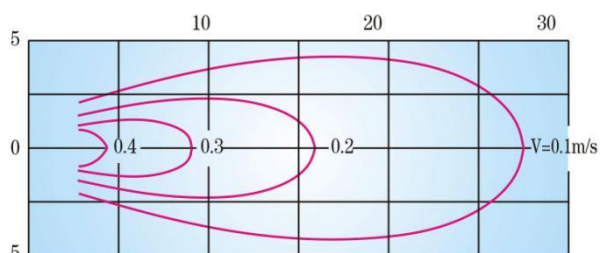
## Условия труда

- Температура жидкости:  $\leq 40^{\circ}\text{C}$   
PH:5~9
- Плотность жидкости:  $\leq 1150 \text{ кг/м}^3$
- Максимальная рабочая глубина: 20 м
- Двигатель: IP 68, непрерывная работа 7/24
- Двигатель ДОЛЖЕН погружаться в воду во время работы

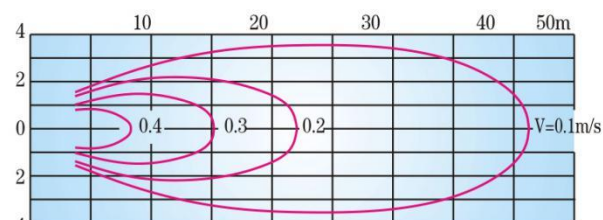
## Модель потока

### Submersible Mixer

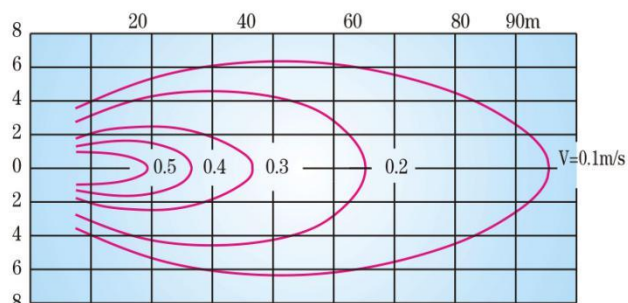
The velocity field is the boundary water velocity  $V=0.1\text{m/s}$  in clear water



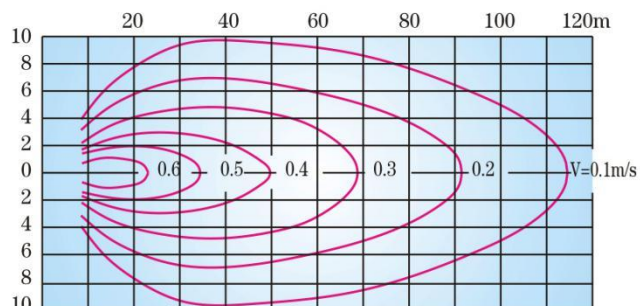
QJB0.85/8-260/3-740/C/S , QJB1.5/6-260/3-960/C/S  
QJB1.5/8-400/3-740/S



QJB2.2/8-320/3-740/C/S , QJB4/6-320/3-960/C/S  
QJB2.5/8-400/3-740/S , QJB4/6-400/3-960/S  
QJB3/8-400/3-740/S

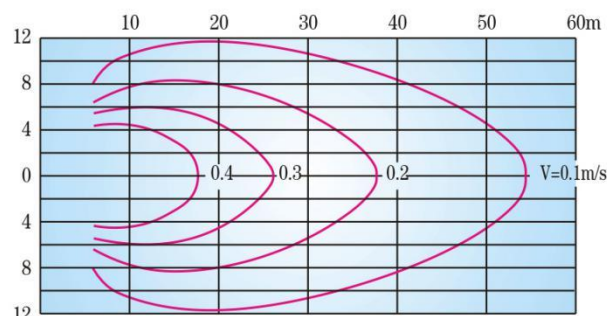


QJB4/12-620/3-480/S , QJB5/12-620/3-480/S

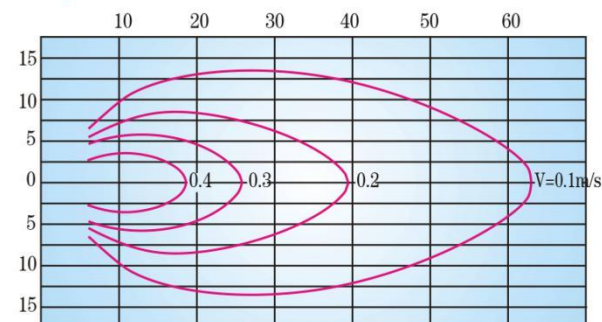


QJB7.5/12-620/3-480/S , QJB10/12-620/3-480/S

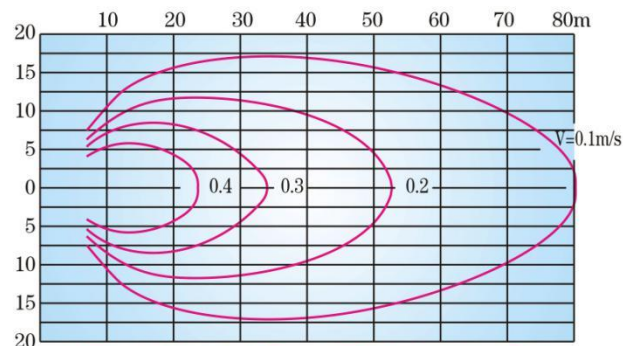
### Low Speed Mixer



QJB1.5/4-1100/2-65/P , QJB2.2/4-1100/2-96/P ,  
QJB3/4-1100/2-115/P , QJB4/4-1100/2-135/P ,  
QJB1.5/4-1400/2-55P , QJB3/4-1100/2-115/P  
QJB3/4-1400/2-87/P



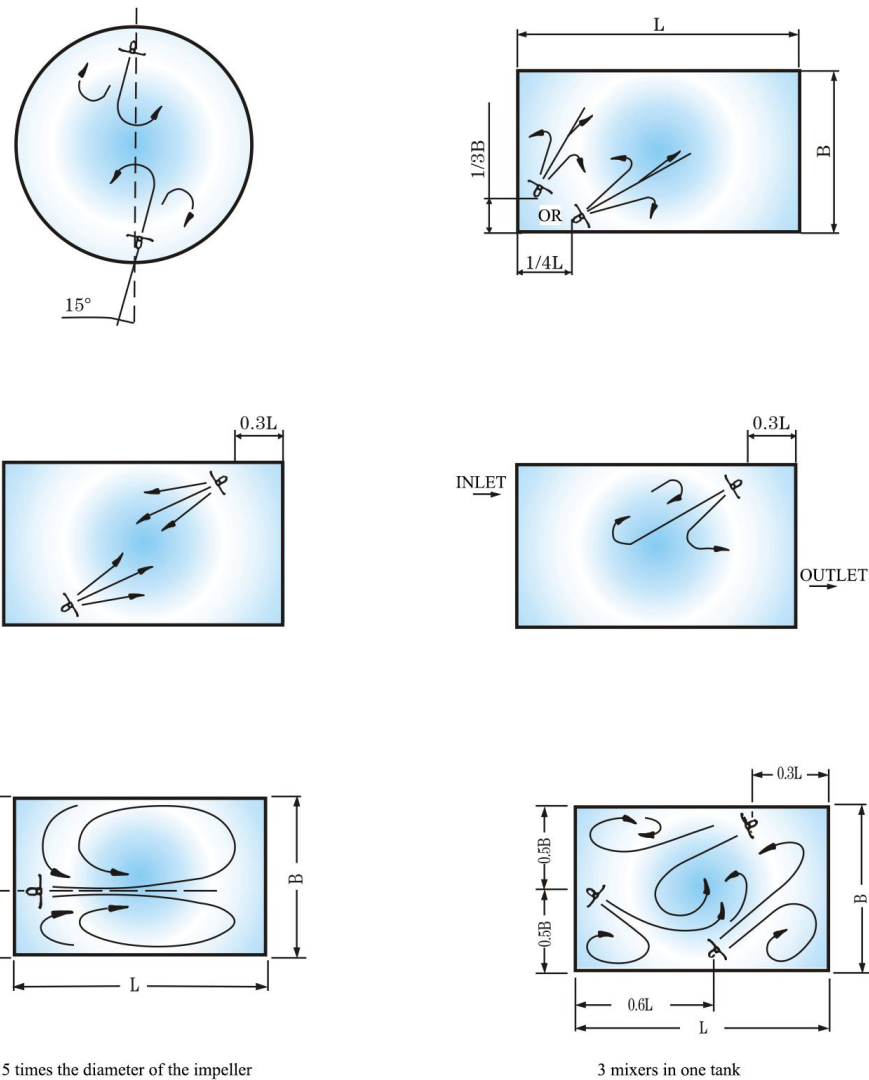
QJB1.5/4-1600/2-48/P , QJB2.2/4-1600/2-56/P ,  
QJB3/4-1600/2-65/P , QJB1.5/4-1800/2-42/P ,  
QJB2.2/4-1800/2-50/P , QJB3/4-1800/2-56/P ,  
QJB1.5/4-2200/2-38/P , QJB2.2/4-2200/2-42/P ,  
QJB3/4-2200/2-48/P , QJB1.5/4-2500/2-36/P ,  
QJB3/4-2500/2-38/P



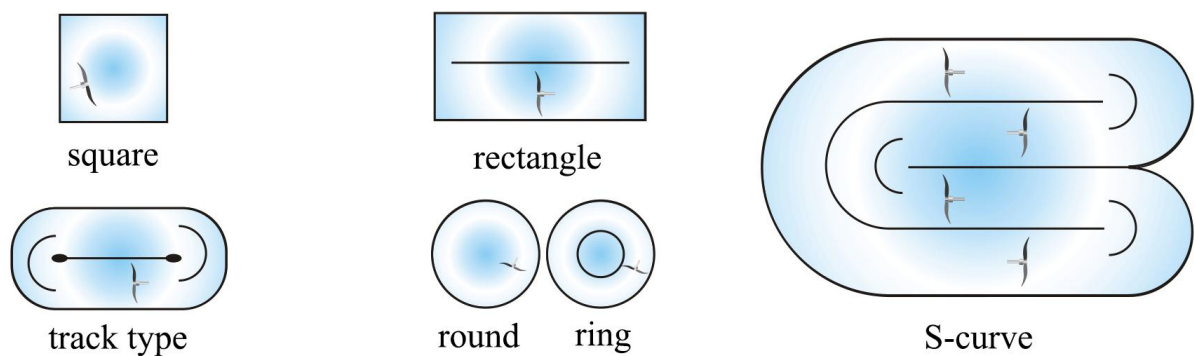
QJB4/4-1600/2-87/P , QJB4/4-1800/2-65/P ,  
QJB4/4-2200/2-56/P , QJB4/4-2500/2-42/P ,  
QJB5/4-2200/2-65/P , QJB5/4-2500/2-56/P ,  
QJB7.5/4-2500/2-65/P



High speed mixer



Low speed mixer



## Упаковка и доставка

Главный двигатель и пропеллер упакованы в деревянный ящик. Монтажный направляющий стержень и подъемная система упакованы в пластиковую ткань.

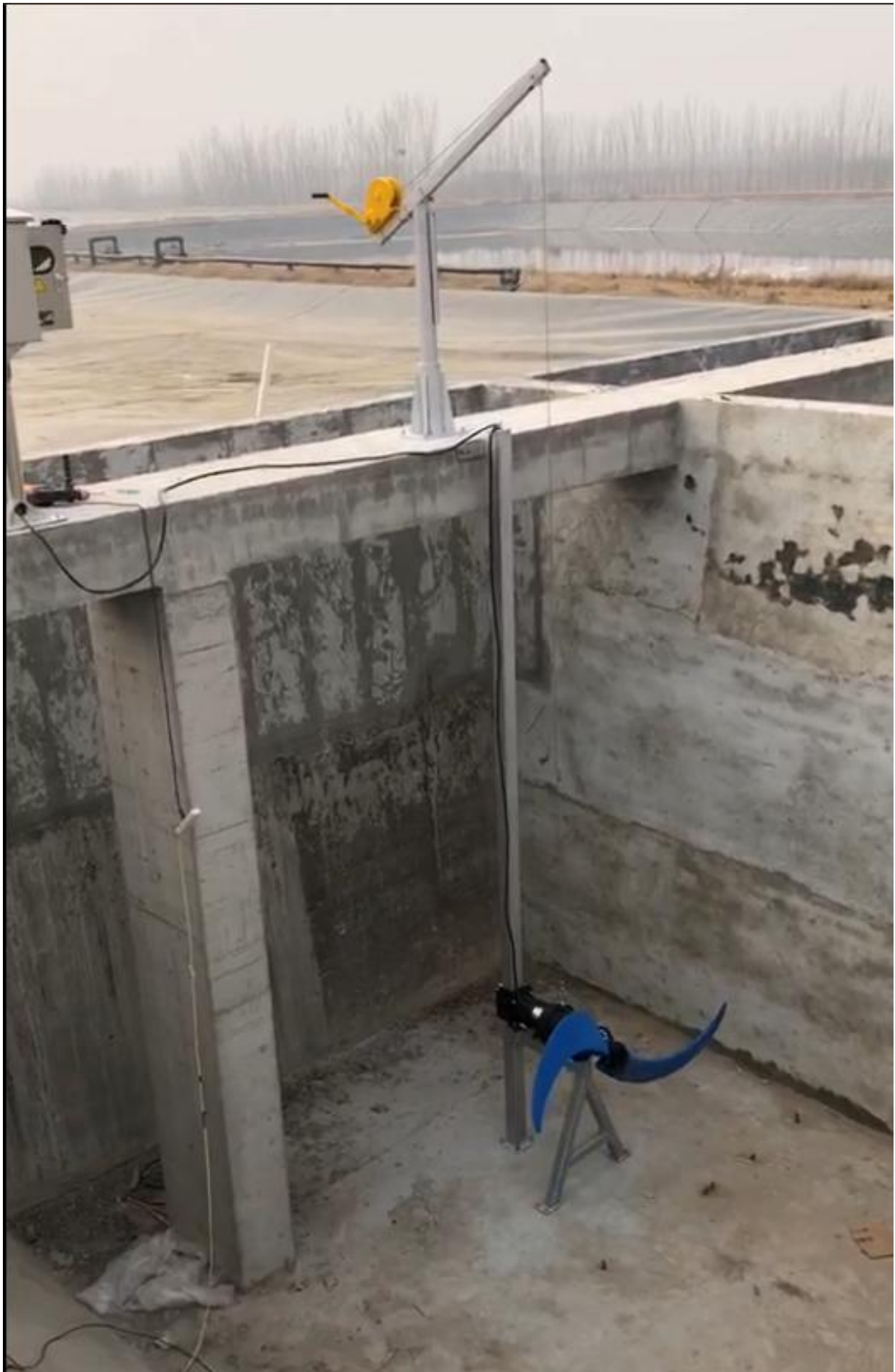




## Пример на месте







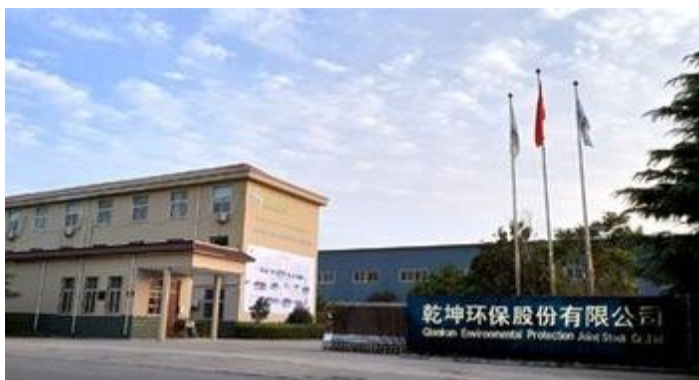
Специализируется на производстве оборудования для очистки сточных вод, такого как система аэрации, система фильтрации, система обезвоживания шлама, система DAF и система MBR. Мы также предлагаем комплексное обслуживание для всех видов проектов по очистке сточных вод, таких как проектирование, изготовление, монтаж, ввод в эксплуатацию и послепродажное обслуживание.

Qiankun — профессиональный и опытный специалист в целлюлозно-бумажной, полиграфической и красильной промышленности, химическом волокне, химикатах, кожевенной промышленности, животноводстве и различных видах промышленности, а также муниципальных проектах по очистке сточных вод. Мы также приобрели глобальную сеть продаж, охватывающую Иран, Индию, Египет, Нигерию, Индонезию, Филиппины, Вьетнам, Таиланд, Малайзию, Россию, Эфиопию, Аргентину, Мьянму и т. д.

Имеем сертификаты квалификации генерального подрядчика по проекту экологической инженерии, строительству муниципальных коммунальных служб и городскому озеленению, а также получаем сертификат системы менеджмента качества ISO9001, сертификат системы экологического менеджмента ISO14001, а также сертификат системы менеджмента охраны труда и техники безопасности OHSAS18001.

Сегодня Qiankun — это высокотехнологичное предприятие, объединяющее НИОКР, проектирование, производство, установку, маркетинг и послепродажное обслуживание.

Qiankun Tech, Чистая вода, чистое небо! Мы настаиваем на профессиональных услугах, качественной продукции и конкурентоспособных ценах, и получаем надежную репутацию среди наших клиентов, мы тепло приветствуем клиентов из Китая и из-за рубежа, чтобы наладить сотрудничество и создать светлое будущее вместе с нами!



Фабрика



Мастерская



Офис



Команда